

# ABACO MACHINES INTERNATIONAL

STONE AND GLASS WORKING PRODUCTS



**The Backbone of the Stone & Glass Industry**



## ABACO MACHINES

Unit 4/34-36 Fairfield St., Fairfield N.S.W 2163 Australia

Tel: 61-2-9632-4990

Fax: 61-2-9632-1510

Email: [abacomachines@abaco.com.au](mailto:abacomachines@abaco.com.au)

Website: [www.abaco.com.au](http://www.abaco.com.au)

## Table of Contents

### Stone Equipment

#### Booms, Lifters, & Clamps

Little Giant Lifter	3
Little Giant Lifter With White Rubber	3
Single-Handed Carry Clamps	4
Carry Clamps	4
Scissor Clamps	4
90° Clamp	4
Lamination Clamps	5
Swing Arm Forklift Boom	5
Forklift Boom	6
Spreader Beam	6
Adjustable Backsplash Brackets	6

#### Material Movers

One Stop A-Frame	7
One Stop A-Frame Pro	7
One Stop High A-Frame	7
One Stop Single Sided A-Frame	7
Universal Slab Buggy Medium/Large	8
Slab Buggy	8
Double Sided Slab Buggy	8
V-Cart	8
Self-Locking Trolley	9
Self-Locking Trolley M3/M4	9
Safety Slab Dolly	9
Multi-Purpose Dolly	9
3 Wheel Slab Dolly/3 Wheel Giant Dolly	10
4 Wheel Slab Dolly/4 Wheel Giant Dolly	10
8" & 11" Slab Dollies	10
Long Slab Dolly	10
Elevating Hand Cart	11
Dumpster	11

#### Frames, Racks, and Tables

Standard A-Frame	12
Universal A-Frame	12
Universal A-Frame M2	12
Truck A-Frame	13
Heavy Duty Truck A-Frame	13
Fabrication Stand	13
Working Table With & Without Casters	14
Kitchen Processing Table	14
Rotating Sandblasting Table	14
Remnant Slab Rack	15
Slab Rack With or Without Rubber	15
Glass Rack	15
Display Showroom Rack	16

### Accessories

Forklift Extensions	16
Tile Suction Cup/Lifter	16
Leveler	16
Sink Lock	17
Sink Hole Support System	17
Ratchet Seam Setter M1	17
Ratchet Seam Setter M2	17
Stonemason Apron	18
Stonemason Sleeves	18
Cable Connect Sling	18
Swivel Shackle	18
Bow Shackle	18
Slab Edge Guards	18
Dehydrator	19

### Saws

Tile Saw	20
Site Saw S1	20
Site Saw S2	21

### Glass Equipment

#### Booms, Lifters, and Clamps

Glass Lifter	22
Single-Handed Glass Carry Clamps	22
Double-Handed Glass Carry Clamps	22

#### Frames, Racks, Tables, and Material Movers

One Stop Glass A-Frame	23
One Stop Glass A-Frame Pro	23
One Stop Glass High A-Frame	23
One Stop Glass Single-Sided A-Frame	23
Glass Universal A-Frame	24
Glass Buggy	24
Universal Glass Buggy	24
Double-Sided Glass Buggy	25
Glass Rack	25
Glass V-Cart	25
3 Wheel Glass Dolly	25
4 Wheel Glass Dolly	25
8" & 11" Glass Dollies	25
Long Glass Dolly	25
Working Glass Table – With and Without Casters	26
Glass Processing Table	26



## Booms, Lifters, & Clamps



### LITTLE GIANT LIFTER

The compact design of the Abaco Lifter will help solve the problem where head room is an issue.

- STRONG AND SECURE
- STRONG LIFTING PIN
- LOWER OVERALL HEIGHT
- STRAIGHT LIFT
- LARGE GRIP RANGE
- INCLUDES SWIVLE SHACKLE

### Dimensions

Model	Length Inches (mm)	Width Inches (mm)	Height Inches (mm)	Grip Range Inches (mm)	W.L.L. Pounds (kg)	Clamp Weight Pounds (kg)
ALG 50	8.3 (211)	7.2 (183)	14.6 (370)	0.4 - 1.9 (10 - 50)	2860 (1300)	49.5 (22.5)
ALG 60	8.5 (216)	7.9 (202)	15.8 (403)	0.7 - 2.3 (20 - 60)	3300 (1500)	60 (27.4)
ALG 75	8.5 (216)	8.6 (219)	15.8 (403)	1.1 - 2.9 (30 - 75)	3300 (1500)	60.5 (27.5)



### LITTLE GIANT LIFTER WITH WHITE RUBBER

Same efficient design as our Little Giant Lifter but with the added benefit of white rubber for use on lighter colored stone.

- STRONG AND SECURE
- STRONG LIFTING PIN
- LOWER OVERALL HEIGHT
- STRAIGHT LIFT
- LARGE GRIP RANGE
- INCLUDES SWIVEL SHACKLE

Model	Length Inches (mm)	Width Inches (mm)	Height Inches (mm)	Grip Range Inches (mm)	W.L.L. Pounds (kg)	Clamp Weight Pounds (kg)
ALG 50W	8.3 (211)	7.2 (183)	14.6 (370)	0.4 - 1.9 (10 - 50)	2860 (1300)	49.5 (22.5)
ALG 60W	8.5 (216)	7.9 (202)	15.8 (403)	0.7 - 2.3 (20 - 60)	3300 (1500)	60 (27.4)
ALG 75W	8.5 (216)	8.6 (219)	15.8 (403)	1.1 - 2.9 (30 - 75)	3300 (1500)	60.5 (27.5)



## SINGLE-HANDED CARRY CLAMPS

Single Handed Carry Clamps safely lift and carry stone slabs in an upright position. Just two people can easily lift and position heavy to maneuver slabs using only one hand, leaving the other free. Rubber pad jaws are vulcanized to increase grip pressure and protect slabs from scratching. Handle is also rubber padded for holding comfort.

- SMALL, LIGHTWEIGHT, & STURDY
- DURABLE HANDLE
- REDUCE HAND FATIGUE
- ONE OF THE MOST VERSATILE CLAMPS

Model	Length Inches (mm)	Width Inches (mm)	Grip Range Inches (mm)	Clamp Weight Pounds (kg)	W.L.L. Pounds (kg)
SHC25 (SET OF 2)	7.9 (201)	4.7 (120)	0 – 1(0 – 25)	3.3 (1.5)	220 (100)

## CARRY CLAMPS

Carry Clamps are designed for safely lifting and transporting stone slabs without using a forklift truck. Fully vulcanized rubber pads provide added grip and prevent damage to the slabs. The weight of the slab places sufficient clamping force for a simple lift. By eliminating the use of a forklift truck, the Carry Clamps help you to work more efficiently on smaller jobs. Use multiple Carry Clamps to move larger slabs with ease.

Model	Length Inches (mm)	Width Inches (mm)	Grip Range Inches (mm)	Clamp Weight Pounds (kg)	W.L.L. Pounds (kg)
ACC40 (SET OF 2)	11.3 (288)	5.2 (132)	0.0 – 1.57 (0 – 40)	5.7 (2.6)	550 (250)



## SCISSOR CLAMP

- Auto lock for easy release.
- Long lasting fully vulcanized rubber pads.
- All natural rubber provides a better grip.
- Protected rubber across jaws (prevents chipping).
- Swivel eye.
- Bow shackle included.
- Replacement pads available.

Model	Length Inches (mm)	Width Inches (mm)	Grip Range Inches (mm)	Clamp Weight Pounds (kg)	W.L.L. Pounds (kg)
SC100	21.3 (542)	7.0 (180)	0.4 - 3.9 (10 - 100)	46.0 (21.0)	2860 (1300)



## 90° CLAMP

Have you ever been frustrated with miter joints? Counter tops not perfectly square with the apron? Need a quick and easy solution?

The Abaco 90° Clamps are the answer!

The Abaco 90° Clamp is specially designed for securing and positioning miter joints. You will no longer have problems with miter joints failing while the glue is drying.

- EFFICIENT
- ACCURATE
- SAVES LABOR
- QUICK & EASY TO USE
- STRONG & SECURE

Specifications:

Length:	11.3" (288 mm)
Grip Range:	0 - 1.6" (0 - 40 mm)
Clamp Weight:	5.72 lbs (2.6 kg)
W.L.L.:	550 lbs (250 kg)



## LAMINATION CLAMPS

- FAST & EFFECTIVE
- SECURE & SAFE
- EASY TO USE
- MINIMAL LABOR

Lamination Clamps are designed for holding multiple slabs together while they are being laminated and glued. The simple design of the C-Clamp allows it to glide with ease on the aluminum bar track and can be tightened and/or loosened quickly when finished. With a sturdy rubber-lined handle, the C-Clamp is very easy to handle and requires minimal labor. The Laminating Clamp weighs less than 3.5 lbs and can handle up to 2 3/4" (7cm) thicknesses. Bars come in various lengths (1', 2', 3', 4', and 6') to accommodate the length of your slabs.



## SWING ARM FORKLIFT BOOM

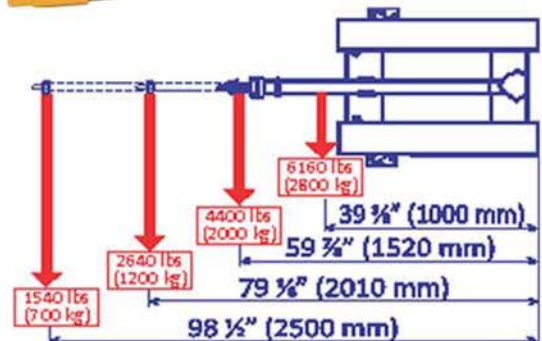
- FULLY EXTENDS TO 2.7 yd ( 2.5m)
- IDEAL FOR UNLOADING CONTAINERS
- ARM SWINGS WITH 5 LOCK POINTS
- VARIOUS ANGLES FOR HARD TO REACH SLABS

The Abaco Swing-Arm Forklift Boom is ideal for hard to reach slabs. It has a large swing area and a long extendable arm. Ideal for small factories where space is an issue. Teamed with the Abaco Lifter makes the best way to unload containers.



Model AFJS25

Net Weight Pounds(kg)	Length Range Inches (mm)	Maximum Load When Fully Extended Pounds (kg)	W.L.L. Pounds (kg)
286 (130)	67.3 (1710)	1540 (700)	6160 (2800)

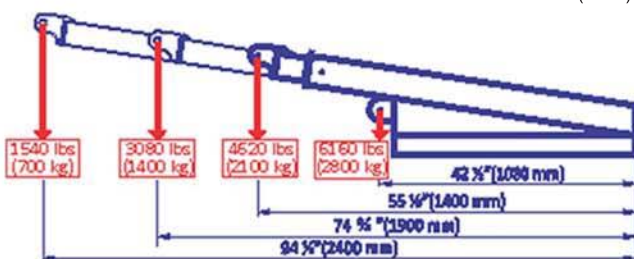


## FORKLIFT BOOM

Designed for use on 2 & 2.5 ton forklift trucks. With its telescopic boom, the Forklift Boom offers versatility with maximum visibility for the driver. Fully extended, it reaches up to 94.5" (2400mm).

Model AFJ25

Length Range Inches (mm)	Width Inches (mm)	Height Inches (mm)	Maximum Load When Fully Extended Pounds (kg)	Net Weight Pounds(kg)	W.L.L. Pounds (kg)
61 (1550)	22.8 (580)	16.3 (415)	1540 (700)	220 (100)	6160 (2800)



## ADJUSTABLE BACKSPLASH BRACKETS

Adjustable Backsplash Brackets are designed for storing and displaying backsplash slabs. The Brackets come in a set of 2 that fit perfectly onto the Abaco Slab Racks. With easy to turn knobs, these Brackets are adjustable to various heights that will accommodate all sizes of backsplash slabs.

Model No. ASB57

Length: 22.5 (572)  
Width: 5 (126)  
Height: 7.3 (185)  
W.L.L.: 396lbs (180kg)  
Net Weight: 4.4lbs (2kg)



*Adjustable  
Backsplash  
Brackets shown  
being used with  
Slab Rack.*



## SPREADER BEAM

This Spreader Beam has a convenient and effective design where straps can easily be hooked onto the bar at each designated slot for moving large slabs or bundles of slabs safely. It is ideal for loading and unloading containers. The bar comes with 6 pre-set belt-spaces and labels of working load limit (WLL) clearly displayed on the bar which makes it safe and easy for all users.

Net Weight Pounds(kg) 101.2 (46)

W.L.L. - lbs (kg): 9900 - 7700 (4500 - 3500)

Length Range - inches (mm): 57.5 - 104.7 (1460 - 2660)



## Material Movers



### ONE STOP A-FRAME

- Designed for transporting and storing material within the factory or building site.
- Slabs are placed on special rubber profiles and secured with 4 ratchet securing bars.
- Contains extra storage section in the center for storing tools, splash backs, etc.
- Frame features 2 eyelets that can be picked up by an overhead crane.
- Space provided on all underneath sides for forklift transport.
- Four removable casters included.
- Quick release mounting pins change the transport rack from mobile to stationary in a minute.

Model	Length Inches (mm)	Width Inches (mm)	Height Including Wheels Inches (mm)	Net Weight Pounds(kg)	Lifting with Eyelets lbs (kg)	Rolling Capacity lbs (kg)	Stationary W/o Casters lbs (kg)
OSA6135	60.7 (1544)	38.3 (975)	50.5 (1282)	345.4(157)	5500 (2500)	4400 (2000)	17600 (8000)
OSA7247	71.8 (1824)	43.3 (1100)	61 (1550)	223.5(101.6)	5500 (2500)	4400 (2000)	30800 (14000)
OSA7263	71.8 (1824)	43.3 (1100)	78.2 (1986)	462 (210)	5500 (2500)	4400 (2000)	30800 (14000)
OSA8756	86.2 (2190)	43.3 (1100)	70.8 (1800)	488.4 (222)	5500 (2500)	4400 (2000)	30800 (14000)
OSA8763	86.3 (2194)	43.3 (1100)	77.9 (1980)	308 (140)	5500 (2500)	4400 (2000)	30800 (14000)



### ONE STOP A-FRAME PRO

- Same great design and features of our One Stop A-Frame, but with the added safety of securing arms.
- Between Posts Max Capacity : 1000lbs (500kg)

### ONE STOP HIGH A-FRAME

- Sturdy design to prevent tipping.
- Keeps your finished works high up off the ground.
- Rubber strips mounted on bottom and back supports to prevent slippage.
- Casters for easy movement around the warehouse.
- Collapsible design to save on freight costs.

Model No. OSHA7236

Net Weight: 308 lbs (140kg)

Length: 63" (1600mm)

Width: 43.3 (1100)

Height: 62 (1576)

Rolling Capacity - lbs (kg): 4400 (2000)

Stationary W/o Casters - lbs (kg): 5500 (2500)



### ONE STOP SINGLE-SIDED A-FRAME

- Sturdy design to prevent tipping. Slabs placed on special rubber profiles and secured with 2 ratchet securing bars.
- Rubber strips mounted on bottom and back supports to prevent slippage.
- Quick release mounting pins change the transport rack from mobile to stationary.
- Removable casters for easy transport around the warehouse or on sites.
- Can be loaded onto truck by forklift.
- Collapsible design to save on freight costs.
- Comes easy to assemble.

Model No. SSA7247

Dimensions: 71.6 (1820 mm) x 25.6 (650 mm) x 60.5 (1536 mm)

Net Weight : 268 lbs (122 kg)

Rolling Capacity - lbs (kg): 4400 (2000)

Stationary W/o Casters - lbs (kg): 15400 (7000)



## UNIVERSAL SLAB BUGGY MEDIUM/LARGE

- Transports slabs safely and easily.
- Big enough to handle large slabs, but small enough to fit through standard doors.
- Iron core polyurethane casters ensure maximum stability.
- The four high quality polyurethane swivel casters, including brakes, allow quick and easy maneuvering.
- This multi-use slab buggy is designed to meet the high demands of the industry. Not only can you transport slabs with ease, but it includes our one of a kind securing arms for added versatility.
- Slabs can be leaned against securing arms. Securing arms can be lowered and angled to secure slabs.
- Convenient storage for securing arms when not in use.



Model	Length Inches (mm)	Width Inches (mm)	Height Inches (mm)	Net Weight Pounds (kg)	W.L.L. Pounds (kg)
USB-6WM	59.0 (1500)	28.7 (730)	58.3 (1480)	220 (100)	5500 (2500)
USB-6WL	71.0 (1800)	33.5 (850)	67.7 (1720)	242 (110)	5500 (2500)



### SLAB BUGGY

- Sturdy structure designed to eliminate any risk of tipping over.
- Thick rubber lined profiles prevent slippage.
- Includes two ratchet tie down straps to secure your load.
- Pneumatic casters for use on smooth or rough surfaces.
- Heavy duty 5" swivel casters with locking brakes.
- Casters positioned outside of the steel frame for stability.

Model	Length Inches (mm)	Width Inches (mm)	Height Inches (mm)	Net Weight Pounds (kg)	W.L.L. Pounds (kg)
SBG800P	48.8 (1240)	25(635)	47 (1195)	103.4 (47)	1100 (500)
SBG800S	48.8 (1240)	26.2(667)	46.2 (1174)	121 (55)	2200 (1000)

\* Pneumatic Tires (P)  
\* Solid Rubber Tires (S)

### DOUBLE-SIDED SLAB BUGGY

- Efficient
- Strong & Secure
- Useful
- Safe
- Casters are positioned outside the steel frame for added stability.
- Pneumatic wheels allow easy transport on virtually any surface.
- Swivel casters include locking brakes.
- Rubber liners protect your finished pieces and prevent them from slipping.
- Designed for maximum stability, but compact enough for smaller work areas.



Model No. DSBG1320P

Length: 53.2 lbs (1352 kg)  
Width: 31.4 lbs (798 kg)  
Height: 47 lbs (1194 kg)  
W.L.L. (per side): 880 lbs (400 kg)  
Net Weight: 147.4lbs (67 kg)

Model No. DSBG1320S

Length: 53.2 lbs (1352 kg)  
Width: 30.6 lbs (778 kg)  
Height: 45.9 lbs (1166 kg)  
W.L.L. (per side): 1320 lbs (600 kg)  
Net Weight: 151.8 lbs (69 kg)



### V-CART

- HANDY
- STURDY
- USEFUL
- VERSITILE

The Abaco V-Cart is a utility cart designed for storing and transporting slabs easily. Its compact structure is designed with 4 heavy duty polyurethane swivel casters for easy maneuvering in narrow areas. The V-Cart enables positioning of slabs in any direction for any purpose. The poles can be repositioned to meet your needs. The poles and base are rubber lined to protect your material from scratches and chipping. Its durable construction adds stability when handling heavy slabs.

Model No.AVC3747

Dimensions: 37.4" x 96.2" x 47.8" (950 mm x 920 mm x 1214 mm)  
W.L.L.: 2200lbs (1000kg)  
Net weight : 160lbs (73kg)



**SELF-LOCKING TROLLEY M2**

- Durable & Convenient
- Strong & Secure
- Transport Easily

The Self-Locking Trolley is designed with self-locking jaws for maneuvering glass and stone slabs around the shop, warehouse, or on work sites. The rubberized jaw and base protect slabs against chipping and scratching while transporting. The self-locking jaws' clamping strength is proportional to the weight of the slab, therefore, the heavier the slab the larger the clamping force. The Self-Locking Trolley has 14" x 4" (350mm x 100mm) diameter pressurized wheels and a 5" (125mm) heavy duty swivel caster that increases stability and flexibility in narrow and on rough surfaces.

Model No. SLT13M2	Seat Length Inches (mm)	Net Weight Pounds (kg)	Grip Range Inches (mm)	W.L.L. Pounds (kg)
	26" (670 mm)	69.3 lbs (31.5 kg)	0.4 - 4 (10 - 100)	1100 (500)

**SELF-LOCKING TROLLEY M3/M4**

The Self-Locking Trolley comes with two pneumatic tires 14" x 4" (350mm x 100mm) in diameter. It is an all terrain trolley. The rubber is vulcanized to the bottom and sides of the trolley to avoid chipping the edges of finished work pieces. M4 model comes with 2 solid rubber wheels.

	Seat Length Inches (mm)	Net Weight Pounds (kg)	Grip Range Inches (mm)	W.L.L. Pounds (kg)
Model No. SLT13M3	19.3 (490)	61.6 (28)	0.4 - 4.0 (10 - 100)	1100 (500)
Model No. SLT13M4	19.3 (490)	66 (30)	0.4 - 4.0 (10 - 100)	1100 (500)

**SAFETY SLAB DOLLY**

- STRONG
- TRANSPORTS SLABS EASILY
- SECURE
- HANDY
- With top support secured to material, the dolly can now move with the material eliminating the need to move the dolly separately.
- Maneuvers easily indoors and out.
- Pneumatic tires help reduce breakage due to vibration.

Model No. SSD35  
 Dimensions: 35.4" x 20.5" x 65" (900 x 520 x 1650mm)  
 Work Capacity: 1430 lbs (650 kg)  
 5" Casters  
 Adjusting Material Support: 12" - 55.1" (305-1400mm)

**MULTI-PURPOSE DOLLY**

- Easy to carry from job to job.
- Convenient for storage when not in use.
- Multi-purpose usage.
- A small and lightweight dolly, ideal for home or warehouse use.
- Durable for handling heavy loads.
- Rubber pads protect the load and minimize slippage.

The swivel casters allow optimum maneuverability in narrow areas. A great dolly for tiling.

M3 / Model No. MPD1812

Channel Length Inches (mm)	Channel Width Inches (mm)	Net Weight Pounds (kg)
17.5" (444 mm)	12" (305mm)	13.2 lbs (6kg)



## 3 WHEEL SLAB DOLLY

## 3 WHEEL GIANT DOLLY

Designed to facilitate the handling and transporting of slabs on the work site. Rubber vulcanized channel protects slabs from chipping and scratching. The Dolly comes with pressurized wheels and a heavy duty locking brake swivel caster that provides additional stability and maneuverability in confined spaces. Comes in 2 sizes to meet your needs.

Model	Length Inches (mm)	Width Inches (mm)	Height Inches (mm)	Channel Width Inches (mm)	Net Weight lbs (kg)	W.L.L. lbs (kg)
SD013	28 (710)	13.4 (340)	13.2 (335)	3.1 (80)	37.4 (17)	1430 (650)
GD013	28 (710)	15 (380)	13.2 (335)	4.7 (120)	40.7 (18.5)	1430 (650)



## 4 WHEEL SLAB DOLLY

## 4 WHEEL GIANT DOLLY

The dolly is joined by 2 solid rubber wheels, 2 swivel casters, and a channel. Rubber is vulcanized to the bottom and the sides of the trolley.

Model	Length Inches (mm)	Width Inches (mm)	Height Inches (mm)	Channel Width Inches (mm)	Net Weight lbs (kg)	W.L.L. lbs (kg)
SDS003	20 (510)	9.8 (250)	8 (205)	3.1 (80)	27 (12)	880 (400)
GDS003	19.6 (498)	13.5 (342)	8 (205)	6.7 (170)	30 (13.5)	880 (400)



## 8" AND 11" SLAB DOLLIES

The 8" and 11" Slab Dollies are small carrying dollies used to move work pieces around the work place. The 8" Slab Dolly is joined by 2 solid rubber wheels and a channel, while the 11" Dolly is joined by 2 pneumatic wheels and a channel. The rubber is vulcanized to the bottom and sides of the trolleys to avoid chipping the edges of the finished work piece.

Model	Channel Length Inches (mm)	Channel Width Inches (mm)	Net Weight Pounds (kg)	W.L.L. Pounds (kg)
SD008 (8" wheels)	20 (510)	3.1 (80)	18.7 (8.5)	660 (300)
SD011 (11" wheels)	20 (510)	3.1 (80)	22.0 (10.0)	660 (300)

## ABACO LONG SLAB DOLLY

Long slab carrying trolleys with two pneumatic tires 12 1/2" (320mm) in diameter. Rubber is vulcanized to the bottom and sides of trolley to avoid chipping edges of finished work piece.

Model No. LSD012

35 7/16" L x 12 5/8" @ the axle x 3 1/8" w/channel (900mm L x 320mm @ the axle x 80mm w/channel)  
Weight: 38.5lbs (17.5kg)  
750lbs (340kg) Maximum Capacity







### ELEVATING HAND CART

- PORTABLE
- SAFE
- EFFORTLESS

Length:	38.5" (977 mm)
Width:	25.8" (656 mm)
Height:	78.7" - 106.2" (2000 mm - 2700mm)
Seat Length:	27.6" (700 mm)
Maximum Lifting Height:	37.4" (950 mm)
Maximum Stone Width:	63" (1600 mm)
Maximum Stone Thickness:	2.8" (70 mm)
Net Weight:	194 lbs (88kg)
W.L.L.:	1100 lbs (500 kg)

This one of the kind Elevating Hand Cart is designed for raising, loading, and unloading finished pieces safely with minimal labor. It is constructed of a vertical steel channel where pieces can be raised and lowered by the use of a hand crank. The hand crank is located on the controlling unit away from pieces being handled for safety purposes. A rubber lined channel can accommodate pieces up to 7cm. 2 pneumatic and 2 self-locking swivel casters are positioned just outside the steel frame of the base for added stability. The Elevating Hand Cart has the ability to elevate pieces from 1 foot up to 3 ½ feet where they can easily load onto a truck bed for transport to and from job sites.

### TIPPING DUMPSTER

A must for every workshop or warehouse. The Abaco Tipping Dumpster is always a handy way to keep your workshop floor clean and safe. The Dumpster is constructed with heavy gauge sheets, angle and channel steel.



Abaco Tipping Dumpster features:

- Handy lever action assures safe dumping.
- Reinforced steel makes the dumpster last longer.
- Heavy duty channel forklift pocket and safety pin add stability and safety when unloading.
- Hydraulic shock absorber adds smoother action when dumping and returning to its position.
- Compact design with four heavy duty casters allow the dumpster to be moved around shop floor, construction site or through narrow spaces easily.

Model	Length Inches(mm)	Width Inches(mm)	Height Inches(mm)	Net Weight Pounds(kg)	Volume (m3)
TD102	61.0(1550)	48.0(1220)	45.6(1160)	639(290)	1.002
TD70	54.7(1390)	46.0(1170)	39.7(1010)	561(255)	0.705

### COLLAPSIBLE DUMPSTER

Model	Length Inches(mm)	Width Inches(mm)	Height Inches(mm)	Net Weight Pounds(kg)	Volume (m3)
CD102	63.1 (1604)	51 (1295)	45.4 (1154)	726 (330)	35.4 (1.002)
CD70	58.6 (1496)	47.8 (1216)	40.1 (1020)	583 (265)	25 (0.705)





## STANDARD A-FRAME

The Standard A-Frame comes as a set of two, designed for the storage of slabs. It is constructed of 2" square steel tubing and a 4" channel base, therefore it is a sturdy structure when compared to other A-frames in the market.

Loading Capacity: 2998 lbs (1363kg) per side. Includes angled timber base blocks to protect the material.

Model	Length Inches (mm)	Width Inches (mm)	Height Inches (mm)	Net Weight Pounds (kg)	W.L.L. Pounds (kg) Per Side
SAF060	59 (1497)	4.0 (100)	58.6 (1490)	121 (55)	16500 (7500)



## UNIVERSAL A-FRAME

- TIME EFFICIENT
- PREVENTS HEAVY LABOR
- ALLOWS EASY ACCESS TO ALL SLABS.
- KEEPS SLABS ORGANIZED, SAFE, AND SECURE

IF YOU EVER;

- Move slabs/sheets around the factory to get one slab/sheet from the back of the pack.
- Have excessive moving of slabs/sheets around the factory.
- Have employees in unsafe positions holding slabs/sheets.
- Use a lot of labor picking up slabs/sheets.

\*\*\*Slabs can be leaned against securing arms which can be lowered and angled to secure slabs.

Model	Length Inches (mm)	Width Inches (mm)	Height Inches (mm)	Net Weight Pounds (kg)	W.L.L. Pounds (kg) Per Side
UAF60	68 (1730)	4.4 (113)	58.6 (1490)	116.6 (53)	16500 (7500)



## UNIVERSAL A-FRAME M2

The Universal A-frame M2 is designed for safe and easy access to all of your slabs. This heavy duty A-Frame can handle more than 24,000 lbs per side (W.L.L. 48,000 lbs total) that comes with 4 safety securing bars where slabs can be leaned against for frequent retrieval of slab(s) safely and with minimal labor. This must have A-Frame not only saves workers' time, but it also prevents unnecessary and excessive moving of slabs by keeping them organized and secured in one area.

Model No. UAF100

Between Posts Max Capacity:	2200 lbs (1000kg)
Loading Capacity Per Side:	24,000 lbs (11,000kg)
Length:	11.8 (2840)
Width:	68.4 (1738)
Height:	63" (1600mm)
Net Weight:	380 lbs (173kg)



## TRUCK A-FRAME

The Abaco Truck A-Frame is constructed from two Standard A-Frames joined by a cross bar, extending the overall length to five feet. It comes with angled timber blocks to protect the materials. It is designed for picking up and moving slabs from one factory to another.

Model	Length Inches (mm)	Width Inches (mm)	Height Inches (mm)	Net Weight Pounds (kg)	W.L.L. Pounds (kg)
TAF060	60.0 (1524)	59 (1497)	58.6 (1490)	138.6 (63)	16500 (7500) Per Side



## HEAVY DUTY TRUCK A-FRAME

The Abaco Heavy Duty Truck A-Frame incorporates two standard A-Frames joined by four cross bars which can be extended to an overall length of five feet. It comes with angled timber blocks to protect materials. The sturdy structure is designed for picking up and moving slabs from one factory to another and handling heavier slabs.

Model	Length Inches (mm)	Width Inches (mm)	Height Inches (mm)	Net Weight Pounds (kg)	W.L.L. Pounds (kg)
TAF60H	60.0 (1524)	59 (1497)	58.6 (1490)	193.6 (88.0)	19800 (9000) Per Side



## FABRICATION STAND

- PORTABLE
- COMPACT
- DURABLE
- FLEXIBLE
- LIGHTWEIGHT

The Fabrication Stand is designed to place slabs on top for polishing, sharpening, cutting, and other purposes. Height is adjustable from 31 1/2" to 39 3/8" (800mm to 1000mm), and it accommodates all slab lengths by adding another stand. Rubberized top protects slabs from being damaged, and it folds easily for carrying from job to job.

Model	Length Inches (mm)	Width Inches (mm)	Height Inches (mm)	Net Weight Pounds (kg)	W.L.L. Pounds (kg)
AFS3139	26.0 (660)	18.3 (465)	31.5-39.4 (800-1000)	29.7 (13.5)	1430 (650) Per Piece

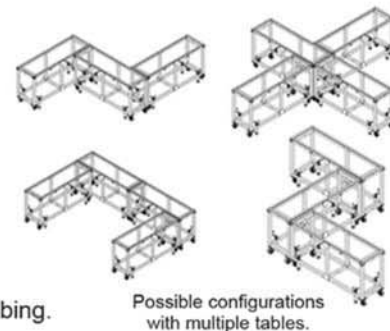


*Folds easily for carrying from job to job.*



## WORKING TABLE WITH AND WITHOUT CASTERS

- Rubber lined sturdy working table.
- Built in brackets allow you to create different work stations.
- Independent adjustable feet.
- Collapsible for ease of transport.
- Constructed of 18 gauge 2" x 2" square tubing.



Model	Length Inches (mm)	Width Inches (mm)	Height Inches (mm)	Net Weight Pounds (kg)	W.L.L. Pounds (kg)
AWT7523	75.9 (1927)	24 (608)	38-40.5(965-1030)	147.4 (67)	4840 (2200)
AWT7523C	75.9 (1927)	24 (608)	38-40.5(965-1030)	162.8 (74)	4840 (2200)



## KITCHEN PROCESSING TABLE

Our Processing Table is designed for you to work more efficiently. The table top tilts from being flat to various degrees for you to work more comfortably. It can easily handle slabs up to 1½" thick. The Processing Table is 79" in length, adjusts from 29" to 39" in height, and tilts at two angles, either 45° or 76°. It comes with casters that make transportation easier. Collapsible design saves on freight costs.

Specifications	
At Flat Position:	79" x 24" x 39" (2000mm x 600mm x 1000mm)
Tilt at 45°:	79" x 24" x 46" (2000mm x 600mm x 1180mm)
Tilt at 76°:	79" x 24" x 49" (2000mm x 600mm x 1250mm)



Model	Length Inches (mm)	Width Inches (mm)	Height Inches (mm)	Net Weight Pounds (kg)	W.L.L. Pounds (kg)
KPT8340	79.6 (2024)	25.3 (644)	40 (1014)	229 (104)	1320 (600)

## ROTATING SANDBLASTING TABLE

- SPECIALLY DESIGNED
- EASY TO USE
- COMPACT
- SECURE

Model No. RST20
Length: 32.2" (820 mm)
Width: 27.5" (700 mm)
Height: 30" - 45.7" (760 mm - 1160 mm)
W.L.L.: 1540 lbs (700kg)
Net Weight: 201.3 lbs (91.5 kg)

The table is designed for sandblasting and engraving on stone surfaces. Its height is adjustable via a 2.4" (60mm) in diameter acme thread. Once the table has reached its desired height, it locks into place, yet the table is still free rotating for added convenience. For ease of use, the table can be tilted so that you can work with your material at different angles. Supported by 6" heavy duty casters, the Sandblasting Table can be easily moved around the workshop and in and out of your sandblasting cabinet.





## REMNANT SLAB RACK

- STURDY
- RELIABLE
- SPACE-SAVING

Model No. RES27

Length: 118.4" (3008 mm)  
 Width: 4" (102 mm)  
 Height: 27.8" (706 mm)  
 Net Weight (per set): 143 lbs (65 kg)  
 Between Posts, Max Capacity: 2200 lbs (1000kg)

The Remnant Slab Rack is designed specifically for storing smaller slabs, such as left over pieces for the next job. It is very economical and compact. You no longer need to throw away smaller pieces or use up valuable space in full size slab racks. Constructed from 3.9" x 1.7" (100mm x 42mm) channels and a 1.1" (27mm) diameter post.



## SLAB RACK WITH OR WITHOUT RUBBER

- Ideal for small workshops where space is scarce.
- Ideal for racking many pieces of different sized materials.
- Consists of 2 x 10ft steel bases.
- 20 steel poles with rubber caps to protect your material.

### Specifications

Length: 118.5" (3012 mm)  
 Width: 6.5" (166 mm)  
 Height: 58.6" (1496 mm)  
 Between Posts Max Capacity: 6000 lbs (2727kg)  
 Weight Per Set With Rubber: 720 lbs (327kg)  
 Weight Per Set Without Rubber: 651 lbs (296kg)

Height Poles	31 1/2" (800 mm)	47 1/4" (1200 mm)	59 1/2" (1500 mm)	70 1/4" (1800 mm)
Between Poles, Max Capacity	12100 lbs (5500 kg)	7700 lbs (3500 kg)	6000 lbs (2727 kg)	4840 lbs (2200 kg)



## GLASS RACK

The Abaco Glass Rack is ideal for storing slabs of different sizes. It is constructed of two 3-meter steel rails that have 28 holes per base. (Distance between the poles is 2 inches.) There are 20 square tube poles that can be repositioned in the rail holes to accommodate varying thicknesses of different slabs. Handles found on the sides of the rails allow for easy transport. Rails are rubber vulcanized to protect slabs from chips and scratches. Poles are either rubber capped, or rubber lined with caps, depending on your needs. The Glass Rack is available in 3 different models. Constructed from 4" x 4" x 1/4" (100 x 100 x 6mm) square tubing for the base while the poles are 2" x 2" x 1/8" (50 x 50 x 3mm) square tubing.



Model	Length Inches (mm)	Width Inches (mm)	Height Inches (mm)	Net Weight Pounds (kg)	W.L.L. (between poles) Pounds (kg)
RSR004	59" (1500 mm)	8.8" (223 mm)	59.4 (1510)	294.8 (134)	6000 (2727)
RSR04R	59" (1500 mm)	8.8" (223 mm)	59.4 (1510)	330 (150)	6000 (2727)
RSR005	78.7" (2000 mm)	8.8" (223 mm)	59.4 (1510)	360.8 (164)	6000 (2727)
RSR05R	78.7" (2000 mm)	8.8" (223 mm)	59.4 (1510)	404.8 (184)	6000 (2727)
RSR010	118.7" (3016 mm)	8.8" (223 mm)	59.4 (1510)	572 (260)	6000 (2727)
RSR10R	118.7" (3016 mm)	8.8" (223 mm)	59.4 (1510)	646.8 (294)	6000 (2727)

Height Poles	31 1/2" (800 mm)	47 1/4" (1200 mm)	59 1/2" (1500 mm)	70 1/4" (1800 mm)
Between Poles, Max Capacity	12100 lbs (5500 kg)	7700 lbs (3500 kg)	6000 lbs (2727 kg)	4840 lbs (2200 kg)

## DISPLAY SHOWROOM RACK

- STURDY
- SAFE
- FULLY ADJUSTABLE & COLLAPSIBLE
- SHIPPED FLAT TO SAVE YOU MONEY

The Abaco Display Showroom Rack is designed for displaying finished slabs. It is constructed of 2 symmetric four-layer tiers joined by 2 crossed rails which are fully adjustable from 40" – 70" to accommodate any slab size. The 2 additional rails at the base add stability and provide extra support. 4 self-locking swivel casters allow the rack to be transported with ease. A brake mechanism is on each caster to stabilize and stop the rack from moving. The Display Rack can be completely collapsed or folded for storage when not in use. With a total W.L.L. of 2819 lbs, this rack is ideal for displaying beautiful finished slabs in your show room or at any trade show.

### Specifications:

Length:	46.5" - 74.5" (1182 mm - 1894 mm)
Width:	50" (1270mm)
Maximum Width of Stone:	28" (710mm)
Maximum Allowable Load:	3300lbs (1500kg)
Maximum Load on Each Branch:	616lbs (280kg)
Net Weight:	242lbs (110kg)



## Accessories



### TILE SUCTION CUP/LIFTER

- COMPACT
- EASY TO OPERATE
- CONVENIENT
- AFFORDABLE

Model No. TSL-4
Diameter Cup: 4 1/4" (107mm)
Height: 2" (50mm)
Holding Capacity: 55 lbs (25kg)
Net Weight: 0.3 lbs (0.15kg)

The Tile Suction Cup/Lifter is designed to pick up tiles with ease. The suction is activated by simply pressing down on the center of the knob. The use of the Tile Suction Cup/ Lifter increases accuracy and efficiency. It is the perfect solution for leveling tiles that have already been laid in place. It is small with a total net weight of just 0.3 lbs and can lift up to 55 lbs safely. Two Tile Suction Cup/Lifters per package.



### FORKLIFT EXTENSIONS

Model No. AFE083	Length Inches (mm)	Width Inches (mm)	Height Inches (mm)
	86.2" (2200 mm)	7.2" (182 mm)	2.7" (70 mm)



### LEVELER

- EFFICIENT
- ACCURATE
- LIGHT WEIGHT
- QUICK & EASY TO USE

Abaco Levelers are designed to level the surface of your countertops.

Model No. ALR200
Dimensions: 7 7/8" x 5 5/16" x 3 5/8"
(200mm x 135mm x 92mm)
Net Weight: 4.18 lbs (1.9 kg)





### SINK LOCK

- LIGHT AND COMPACT
- SIMPLE AND EASY TO USE
- VERY EFFICIENT

The must have tool for the positioning and gluing of sinks to counter tops. The Sink Lock allows for perfect positioning, and you will not have any difficulties in adjusting the location of the sink. The Sink Lock securely supports your sink while the glue is drying and has a quick release lock.

	Model	Length Inches (mm)	Width Inches (mm)	Height Inches (mm)	Depth Capacity Inches (mm)	Holding Capacity Pounds (kg)	Net Weight Pounds (kg)
24" Single	Model No. SLS24	26.8 (680)	6.5 (165)	2.7" (68 mm)	19" (480)	660 lbs (300 kg)	5lbs (2.3kg)
48" Double	Model No. SLD48	51.2 (1300)	6.5 (165)	2.7" (68 mm)	19" (480)	660 lbs (300 kg)	10lbs (4.6kg)

### ABACO SINK HOLE SUPPORT SYSTEM

- EFFICIENT
- STRONG & SECURE
- EASY TO USE

The Abaco Sink Hole Support System is a device that protects finished stone pieces from cracking during lifting, moving, and installation. The device is an ideal solution to strengthen countertops with sink cut outs and backsplashes, especially fragile stone materials. This versatile design uses the combined clamping power of 20 single suction cups with high strength extruded aluminum support rails. The suction cups quickly slide and lock in the rail for custom placement around sink holes.



Specifications  
Length: 82 11/16" (2100mm)  
Net Weight: 57lbs (26kg)  
Aluminum Bar: 2 pcs  
Suction Cup: 20 pcs



### RATCHET SEAM SETTER M1

The Abaco Ratchet Seam Setter provides a quick and easy solution for the accurate and safe positioning of countertops. The tool is lightweight and simple to use. No other device is this fast and convenient. Knob device allows precision vertical adjustment.

Model No. ARSS1

Positioning /Holding Capacity: 132.32 lbs (60kg)

Diameter of Suction Cup: 8.3" (210mm)

Length: 20" (510 mm)

Width: 8" (220 mm)

Height: 10" (254 mm)

Diameter of Cup: 8" (203 mm)

Net Weight: 13.2 lbs (6 kg)

### RATCHET SEAM SETTER M2

- LIGHT AND COMPACT
- SIMPLE AND EASY TO USE
- VERY EFFICIENT

With the Seam Setter your counter tops will be perfectly joint and level. With a large foot print, 8" (203mm) suction cups, our Seam Setter is strong enough for the required task. The Seam Setter M2 has two leveling points; therefore lippage is no longer a problem.

Model No. ARSS2

Length: 18.5" (470 mm)

Width: 9.6" (245 mm)

Height: 8.8" (225 mm)

Diameter of Cup: 8" (203mm)

Net Weight: 13.2 lbs (6 kg)



## STONEMASON APRON

A Must Have Heavy Duty Apron for all Stonemasons.

- Revolutionizing the Industry.
- Quick snap straps ideal for a quick and easy fit.
- Made of a double layer of the highest quality material for extra protection.
- Velcro strips for quickly accessing polishing pads.
- Advertise your company. Customize the logo.

Model No. SMA048

Height: 47 1/4" (1200mm)  
Width: 35 7/16" (900mm)



## STONEMASON SLEEVES

The Abaco Stonemason Sleeves fit snugly around the wrist and upper sleeve area to prevent clothes from getting soaked during wet grinding.

Model No. SMS019



## CABLE CONNECT SLING

Specifications  
Size: 0.4" (10mm)  
Net Weight: 2.5 lbs (1.14kg)  
WLL: 3300lbs (1500kg)  
Model No. ASL017



## SWIVEL SHACKLE

Size: 3/4" (20mm)  
Net Weight: 6.6 lbs (3kg)  
Loading Capacity: 5500 lbs (2500 kg)  
Model No. SWS2500



## BOW SHACKLE

Specifications  
Size: 0.9" (22mm)  
Net Weight: 2.8 lbs (1.26kg)  
Loading Capacity: 3300 lbs (1500kg)  
Model No. ABS22



## SLAB EDGE GUARDS

- Temporarily support counter tops, stone panels, etc. to avoid breaking, chipping, or scratching.
- Simple, effective, and easy to use.
- Saves time and effort.
- Compact, light weight, and easy to carry around.
- 2 thicknesses to choose from.

MODEL	Length In (mm)	Width In (mm)	Height In (mm)	Net Weight lbs (kg)	Channel Width In (mm)
SEG20B	1.6 (40)	1.4 (35)	2.5 (65)	0.2 (0.09)	0.7 (20)
SEG30B	1.6 (40)	1.4 (35)	2.5 (65)	0.22 (0.1)	1.2 (30)
SEG40B	1.6 (40)	1.4 (35)	2.7 (70)	0.24 (0.11)	1.6 (40)
SEG20W	1.6 (40)	1.4 (35)	2.5 (65)	0.2 (0.09)	0.7 (20)
SEG30W	1.6 (40)	1.4 (35)	2.5 (65)	0.22 (0.1)	1.2 (30)
SEG40W	1.6 (40)	1.4 (35)	2.7 (70)	0.24 (0.11)	1.6 (40)

DESIGNED IN TWO COLORS BLACK OR WHITE RUBBER





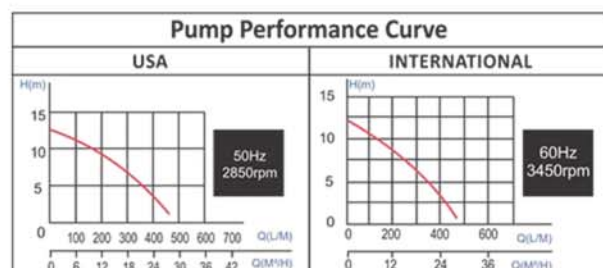
## DEHYDRATOR

The Abaco Dehydrator is a dehydration system for the fast collection and trapping of the abrasive mud produced by machining and finishing marble, granite and other stones. The Abaco Dehydrator is an economical, one step method in separating and dewatering sludges and slurries. The Dehydrator is constructed of stainless steel and consists of four basic components: pump, mud holding tank, clean water tray, and filter bags. The Abaco Dehydrator has no moving parts, requires minimal labor, and is very economical to use. Since it is constructed out of stainless steel, it requires extremely low maintenance.

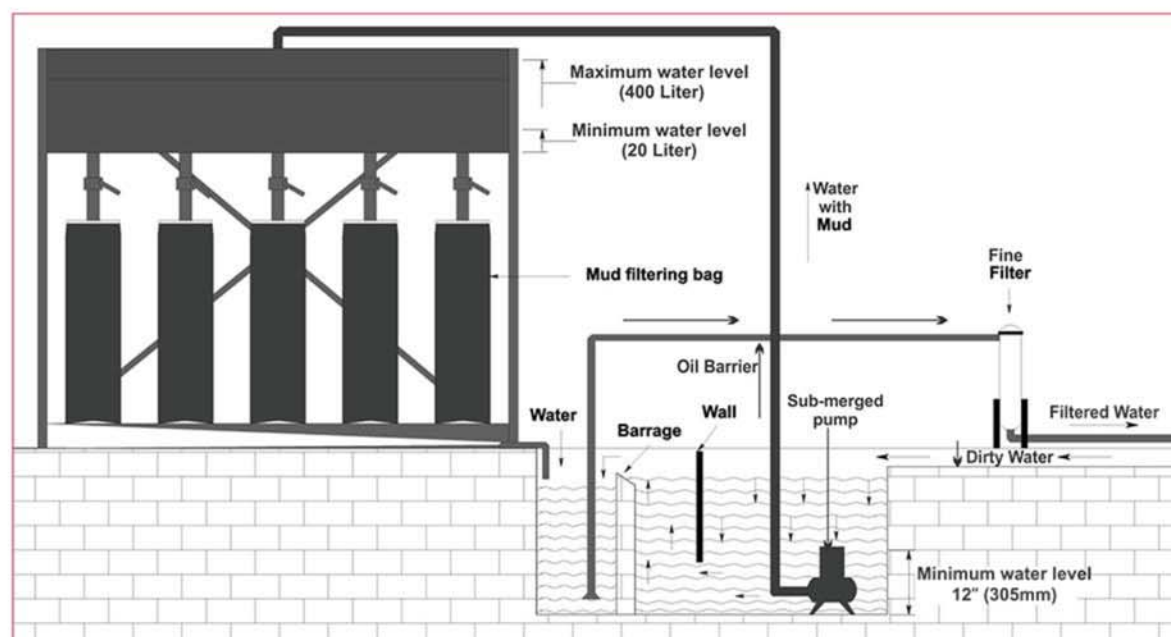
### TWO TYPES AVAILABLE:

Stainless Steel

Zinc Sealed Marine Coated



MODEL	Length In (mm)	Width In (mm)	Height In (mm)
ADE089	95 13/16 (2433)	27 1/16 (700)	91 3/4 (2330)
Net Weight - lbs (kg)	617 (280)		
Float Switch	Automatic		
Bag Dimension	13 3/4 x 47 1/4" (350 x 1200 mm)		
Material	Stainless Steel		
Valves	2 Inch BSP Brass Nickel Plated		
Filter Capacity 25 % sludge in the water	3m³ / 1 hour		



## SAWS



### TILE SAW

The Abaco Tile Saw features a powerful 1.5 HP direct-drive A/C motor. This versatile tile saw can easily cut through marble, granite, tile, and other ceramic products with remarkable precision. The Abaco Tile Saw is capable of making 45° miter cuts. Comes standard with a thermal protection safety switch.

Motor Parameter	USA	INTERNATIONAL	TS1	Unit
Power	1.1 kW	1.1 kW	Blade Diameter	10" (254 mm)
Voltage	110 V	220 V	Cutting depth at 90°	2 1/4" (55 mm)
Frequency	60 Hz	50 Hz	Cutting depth at 45°	1 1/4" (30 mm)
Phases	1	1	Cutting length	26 1/4" (660 mm)
Speed	3400 rpm.	2800 rpm.	Water Pump	
			Power	110V/50W 220V/50W
MODEL	Length - In (mm)	Width - In (mm)	Height - In (mm)	Net Weight - lbs (kg)
TS1	41 1/4" (1055)	30 3/4" (772)	47 1/4" (1215)	187 (85)

- Powder coated water tray provides additional strength while preventing rust and scratches.
- Includes a sturdy, light-weight steel stand.
- Submersible water pump provides high output coolant for maximum protection of the diamond blades.
- Switch contains thermal circuit breaker to protect against overload and short circuit conditions.
- Features a specially designed table that supports larger size tiles.
- An adjustable stop guide is included.
- Can cut up to 26" (660mm) tiles.
- Carrying handles for easy transportation.
- Guided by dual linear bearings on induction hardened chrome bar (Rust Free).
- Bolted down cast aluminum machined, working table.

### SITE SAW S1

The powerful Abaco Site Saw Mod S1 features a 3 HP motor and is guided by dual linear bearings on induction hardened chrome bar (Rust Free). The cast aluminum machined working table is accurate for cutting of all types of natural and artificial stone. The Site Saw S1 is suitable for construction sites and workshops. Incorporated in the Mod S1 are wheels and rollers for effortless single-handed transportation.

MODEL	Length In (mm)	Width In (mm)	Height In (mm)	Net Weight lbs (kg)
MODS1	62 1/4" (1585)	76 1/4" (1950)	56 1/4" (1439)	343.2 (156)

#### \* ModS1 - 1P (1 Phase)

MODS1	Unit				Motor Parameter	USA	INTERNATIONAL
	Inches	Millimeters					
Blade Diameter	10"	11 1/4"	254 mm	300 mm	Horsepower	2 kW	2.2 kW
Cutting depth at 90°	1 1/4"	2 1/4"	50 mm	60 mm	Voltage	110 V	220 V
Cutting depth at 45°	1/4"	1 1/4"	25 mm	30 mm	Frequency	60 Hz	50 Hz
Cutting length	41 1/4" (1050 mm)				Phases	1	1
					Speed	3400 rpm.	2800 rpm.
					Water Pump		
					Power	110V/50W	220V/50W

#### \* ModS1- 3P (3 Phase)

MODS1	Unit				Motor Parameter	USA	INTERNATIONAL
	Inches	Millimeters					
Blade Diameter	10"	11 1/4"	13 1/4"	254 mm 300 mm 350 mm	Horsepower	3.7 kW	3.7 kW
Cutting depth at 90°	1 1/4"	2 1/4"	3 1/4"	50 mm 60 mm 80 mm	Voltage	220 V	380 V
Cutting depth at 45°	1/4"	1 1/4"	1 3/4"	25 mm 30 mm 40 mm	Frequency	60 Hz	50 Hz
Cutting length	41 1/4" (1050 mm)				Phases	3	3
					Speed	3400 rpm.	2800 rpm.
					Water Pump		
					Power	110V/50W	220V/50W







## SITE SAW S2

The powerful Abaco Site Saw Mod S2 is ideal for construction sites and workshops. On one side the saw has roller conveyers which make loading easy, while on the other side adjustable stops make exact parallel cuts. This precision saw has a cutting length of 1.8 yd (1.65m) and incorporated in this machine are wheels and rollers for effortless single-handed transportation. The Mod S2 features an electric direct drive fully submersible water pump. Capacity 1000L/hr and the Abaco Mod S2 accessories include 2 side benches with rollers and 2 support arms with stops.

MODEL	Length In (mm)	Width In (mm)	Height In (mm)	Net Weight lbs (kg)
MODS2	83 (2110)	83 (2108)	64.7 (1644)	572 (260)

### \* ModS2 - 1P (1 Phase)

Dimensions	Inches		Millimeters		Motor Parameter	USA	INTERNATIONAL
Blade Diameter	10"	11.8"	254 mm	300 mm	Horsepower	2 kW	2.2 kW
Depth of cut at 90°	2"	2.3"	50 mm	60 mm	Voltage	110V	220V
Depth of cut at 45°	1"	1.2"	25 mm	30 mm	Frequency	60Hz	50 Hz
Max. Cutting length	65"		1650 mm		Speed	3400 rpm.	2800 rpm.
Phases	1		1		Water Pump		
					Power	110V/50W	220V/50W

### \* ModS2- 3P (3 Phase)

Dimensions	Inches			Millimeters			Motor Parameter	USA	INTERNATIONAL
Blade Diameter	10"	11.8"	13.7"	254mm	300mm	350mm	Horsepower	3.7 kW	3.7 kW
Depth of cut at 90°	2"	2.3"	3.1"	50mm	60mm	80mm	Voltage	220V	380V
Depth of cut at 45°	1"	1.2"	1.6"	25mm	30mm	40mm	Frequency	60Hz	50 Hz
Max. Cutting length	65"			1650 mm			Speed	3400 rpm.	2800 rpm.
Phases	3			3			Water Pump		
							Power	110V/50W	220V/50W

## GLASS PRODUCTS



### GLASS LIFTER

- FULLY AUTOMATIC
- STRONG & SECURE
- SAVES SPACE
- SUPERIOR DESIGN
- ENGINEERED TO LAST
- LARGE GRIP RANGE

#### Specifications

Grip Range:	0.16" to 1.1" (4mm to 28 mm)
Length:	23.5" (598 mm)
Width:	8.6" (218 mm)
Height:	25.2" (640 mm)
W.L.L.:	1760 lbs (800 kg)
Net Weight:	61.6 lbs (28 kg)

Designed for transporting glass sheets safely and securely with ease with its fully automated jaws clamping on both sides, therefore the labor required is minimal. The 4 lower wheels of the lifter are used to keep the lifter above the surface, away from any abrasive particles that may scratch the glass. The 4 upper wheels are used to create pressure between the surfaces and to guide the sheet up into the clamp. The dual sided clamp distributes its pressure evenly across the material being handled. The additional layer of vulcanized rubber on the clamp allows for added grip as well as preventing scratches on the material being handled. Its light and compact design with a total weight of only 66 lbs makes it easy for transport and storage.



### SINGLE-HANDED GLASS CARRY CLAMPS

- SMALL, LIGHTWEIGHT & STURDY
- DURABLE HANDLE
- REDUCE HAND FATIGUE
- ONE OF THE MOST VERSATILE CLAMPS

#### Model SHC25 (SET OF 2)

Length:	7.9" (201 mm)
Width:	4.70" (120mm)
Grip Range:	0" - 1" (0 - 25 mm)
Clamp Weight:	3.3lbs (1.5kg)
W.L.L.:	220lbs (100kg)

Single Handed Glass Carry Clamps safely lift and carry glass in an upright position. Just two people can easily lift and position heavy to maneuver glass using only one hand, leaving the other free. Rubber pad jaws are vulcanized to increase grip pressure and protect glass from scratching. Handle is also rubber padded for holding comfort.



### DOUBLE-HANDED GLASS CARRY CLAMPS

Double-Handed Glass Carry Clamps are designed for safely lifting and transporting glass without using a forklift truck. Fully vulcanized rubber pads provide added grip and prevent damage to the glass. The weight of the glass places sufficient clamping force for a simple lift. By eliminating the use of a forklift truck, the Double-Handed Glass Carry Clamps help you to work more efficiently on smaller jobs. Use multiple Double-Handed Glass Carry Clamps to move larger glass with ease.

Model	Length Inches (mm)	Width Inches (mm)	Grip Range Inches (mm)	Clamp Weight Pounds (kg)	W.L.L. Pounds (kg)
ACC40	11.3 (288)	5.2 (132)	0.0 - 1.57 (0 - 40)	5.7 (2.6)	550 (250)





### ONE STOP GLASS A-FRAME

- Sturdy structure is designed to eliminate any risk of glass tipping over.
- Glass sheets are placed on special rubber profiles and secured with 4 ratchet securing bars.
- Contains extra storage section in the center.
- Frame features 2 eyelets to be picked up by an overhead crane.
- Built in brackets on all underneath sides for forklift transport.
- Four removable casters included.

#### Dimensions

Model	Length Inches (mm)	Width Inches (mm)	Height Including Wheels Inches (mm)
OSA6135	60.6 (1540)	38.3 (975)	50.6 (1285)
OSA7247	71.0 (1810)	43.3 (1100)	62.4 (1585)
OSA7263	71.0 (1810)	43.3 (1100)	78.1 (1985)
OSA8756	86.3 (2190)	43.3 (1100)	71.0 (1805)
OSA8763	86.3 (2194)	43.3 (1100)	78.1 (1985)



### ONE STOP GLASS A-FRAME PRO

- Same great design and features of our One Stop A-Frame, but with the added safety of securing arms.
- Between Posts Max Capacity : 1000lbs (500kg)



### ONE STOP GLASS HIGH A-FRAME

- Sturdy design to prevent tipping.
- Keeps your finished works high off the ground.
- Rubber strips mounted on bottom and back supports to prevent slippage.
- Casters for easy movement around the warehouse.
- Collapsible design to save on freight costs.

Model No. OSHA7236

#### Dimensions:

63" x 43.3" x 62" (1600 x 1100 x 1576mm)



### ONE STOP GLASS SINGLE SIDED A-FRAME

- Sturdy design to prevent tipping.
- Glass sheet is placed on special rubber profiles and secured with 2 ratchet securing bars.
- Rubber strips mounted on bottom and back supports to prevent slippage.
- Quick release mounting pins change the A-Frame from mobile to stationary.
- Removable casters for easy transport around the warehouse or on sites.
- Can be loaded onto truck by forklift.
- Comes easy to assemble.
- Collapsible design to save on freight costs.

Model No. SSA7247

Dimensions: 71" x 25.6" x 60.5" (1810 x 650 x 1536mm)

W.L.L.: 15400 lbs (7000 kg)

## GLASS UNIVERSAL A-FRAME

### IF YOU EVER;

- Move slabs/sheets around the factory to get one slab/sheet from the back of the pack.
- Have excessive moving of slabs/sheets around the factory.
- Have employees in unsafe positions holding slabs/sheets.
- Use a lot of labor picking up slabs/sheets.

\*\*\*Slabs can be leaned against securing arms which can be lowered and



Model	Length Inches (mm)	Width Inches (mm)	Height Inches (mm)	Net Weight Pounds (kg)	W.L.L. Pounds (kg)
UAF60	68 (1730)	4.4 (113)	58.6 (1490)	116.6 (53)	16500 (7500) Per Side



## GLASS BUGGY

- Casters are positioned outside of the steel frame for added stability.
- Pneumatic wheels allow for easy transport on rough surfaces.
- Swivel casters include locking brakes.
- Narrow design allows the Glass Buggy to fit through any standard door.
- The A-frame and the bottom of the Glass Buggy are rubber-lined to protect the glass sheets and prevent them from slipping.
- Designed for maximum stability, but compact enough for smaller work areas.

Model	Length Inches (mm)	Width Inches (mm)	Height Inches (mm)	Net Weight Pounds (kg)	W.L.L. Pounds (kg)
SBG800P	48.8 (1240)	25(635)	47 (1195)	103.4 (47)	1100 (500)
SBG800S	48.8 (1240)	26.2(667)	46.2 (1174)	121 (55)	2200 (1000)

\* Pneumatic Tires (P)  
\* Solid Rubber Tires (S)

## UNIVERSAL GLASS BUGGY

- Transports glass sheets safely and easily.
- Big enough to handle large sheets, but small enough to fit through standard doors.
- Iron core polyurethane casters enable maximum stability.
- The four high quality polyurethane swivel casters, including brakes, allow quick and easy maneuvering.

This multi-use Universal Glass Buggy is designed to meet the high demands of the industry. Not only can you transport glass sheets with ease, but it includes our one of a kind securing arms for added versatility.

Model	Length Inches (mm)	Width Inches (mm)	Height Inches (mm)	Net Weight Pounds (kg)	W.L.L. Pounds (kg)
USB-6WM	59.0 (1500)	28.7 (730)	58.3 (1480)	220 (100)	5500 (2500)
USB-6WL	71.0 (1800)	33.5 (850)	67.7 (1720)	242 (110)	5500 (2500)





## DOUBLE-SIDED GLASS BUGGY

The Double Sided Glass Buggy is designed for maximum stability and compact enough to fit through most doors. Both the A-part and base are fully rubber lined to protect your finished pieces and to prevent them from slipping. This Buggy comes with 2 self-locking swivel casters and 2 pneumatic wheels that allow for easy transport on virtually any surface.

Model No. DSBG1320P

Length: 53.2 lbs (1352 kg)  
Width: 31.4 lbs (798 kg)  
Height: 47 lbs (1194 kg)  
W.L.L. (per side): 880 lbs (400 kg)  
Net Weight: 147.4 lbs (67 kg)

Model No. DSBG1320S

Length: 53.2 lbs (1352 kg)  
Width: 30.6 lbs (778 kg)  
Height: 45.9 lbs (1166 kg)  
W.L.L. (per side): 1320 lbs (600 kg)  
Net Weight: 151.8 lbs (69 kg)

\* Pneumatic Tires (P)

\* Solid Rubber Tires (S)



## GLASS RACK

The Glass Rack is ideal for storing glass sheets of different sizes. It is constructed of two 3-meter steel rails that have 28 holes. There are 20 square tube poles that can be repositioned in the rail holes to accommodate varying thicknesses of different glass sheets. Handles are located on the sides of the rails to allow for easy transport. Rails are rubber vulcanized to protect glass sheets from chips and scratches. Poles are either rubber capped, or rubber lined with caps, depending on your needs. Each Glass Rack base is lined with rubber to protect the edge of glass. Available in 3 different models. Constructed from 4" x 4" (100x100x6mm) square tubing for the base, and the poles are 2"x2"x1/8" (50x50x3mm) square tubing.



Model	Length Inches (mm)	Width Inches (mm)	Height Inches (mm)	Net Weight Pounds (kg)	W.L.L. (between poles) Pounds (kg)
RSR004	59" (1500 mm)	8.8" (223 mm)	59.4 (1510)	294.8 (134)	6000 (2727)
RSR04R	59" (1500 mm)	8.8" (223 mm)	59.4 (1510)	330 (150)	6000 (2727)
RSR005	78.7" (2000 mm)	8.8" (223 mm)	59.4 (1510)	360.8 (164)	6000 (2727)
RSR05R	78.7" (2000 mm)	8.8" (223 mm)	59.4 (1510)	404.8 (184)	6000 (2727)
RSR010	118.7" (3016 mm)	8.8" (223 mm)	59.4 (1510)	572 (260)	6000 (2727)
RSR10R	118.7" (3016 mm)	8.8" (223 mm)	59.4 (1510)	646.8 (294)	6000 (2727)

Height Poles	31 1/2" (800 mm)	47 1/4" (1200 mm)	59 1/2" (1500 mm)	70 7/8" (1800 mm)
Between Poles, Max Capacity	12100 lbs (5500 kg)	7700 lbs (3500 kg)	6000 lbs (2727 kg)	4840 lbs (2200 kg)



## GLASS V-CART

- HANDY
- STURDY
- USEFUL
- VERSITILE

The Abaco V-Cart is a utility cart designed for storing and transporting glass sheets easily. Its compact structure is designed with 4 heavy duty polyurethane swivel casters for easy maneuvering in narrow areas. The V-Cart enables positioning of glass sheets in any direction for any purpose. The poles can be repositioned to meet your needs. The poles and base are rubber lined to protect your sheets from scratches and chipping. Its durable construction adds stability when handling heavy glass sheets.

Model No. AVC3747

Dimensions: 37.4" x 96.2" x 47.8" (950 mm x 920 mm x 1214 mm)

W.L.L.: 2200lbs (1000kg)

Net weight : 160lbs (73kg)

## 3 WHEEL GLASS DOLLY

The 3 Wheel Glass Dolly is designed to facilitate the handling and transporting of glass sheets on work sites. The rubber vulcanized channel protects glass sheets from chipping and scratching. It comes with pressurized wheels and a heavy duty locking brake swivel caster to provide additional stability and maneuverability in confined spaces.

Made in 2 sizes to meet your needs.

Model	Length Inches (mm)	Width Inches (mm)	Height Inches (mm)	Channel Width Inches (mm)	Net Weight lbs (kg)	W.L.L. lbs (kg)
SD013	28 (710)	13.4 (340)	13.2 (335)	3.1 (80)	37.4 (17)	1430 (650)
GD013	28 (710)	15 (380)	13.2 (335)	4.7 (120)	40.7 (18.5)	1430 (650)



## 4 WHEEL GLASS DOLLY

The 4 Wheel Glass Dolly is used to move loads around the work site. It is joined by 2 solid rubber wheels, 2 swivel casters, and a channel. The rubber is vulcanized to the bottom and sides of the dolly to avoid chipping any edges on the finished glass.

Model	Length Inches (mm)	Width Inches (mm)	Height Inches (mm)	Channel Width Inches (mm)	Net Weight lbs (kg)	W.L.L. lbs (kg)
SDS003	20 (510)	9.8 (250)	8 (205)	3.1 (80)	27 (12)	880 (400)
GDS003	19.6 (498)	13.5 (342)	8 (205)	6.7 (170)	30 (13.5)	880 (400)



## 8" & 11" GLASS DOLLIES

The 8" & 11" Glass Dollies are small carrying dollies used to move glass around the work place. The 8" Glass Dolly is joined by 2 solid rubber wheels and a channel, while the 11" Dolly is joined by 2 pneumatic wheels and a channel. The rubber is vulcanized to the bottom and sides of the trolleys to avoid chipping the edges of the glass.

Model	Channel Length Inches (mm)	Channel Width Inches (mm)	Net Weight Pounds (kg)	W.L.L. Pounds (kg)
SD008 (8" wheels)	20 (510)	3.1 (80)	18.7 (8.5)	660 (300)
SD011 (11" wheels)	20 (510)	3.1 (80)	22.0 (10.0)	660 (300)

## LONG GLASS DOLLY

The Long Glass Dolly comes with two pneumatic tires. The pneumatic wheels are 12 1/2" x 3 1/2" in diameter. Rubber is vulcanized to the bottom and sides of the dolly to avoid chipping edges of finished glass.

Model No. LSD012

35 7/16" L x 12 5/8" @the axle x 3 1/8" width channel.  
(900mm L x 320mm @the axle x 80mm width channel)

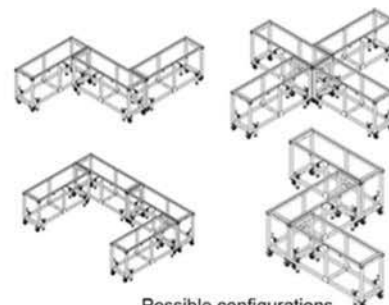






### WORKING GLASS TABLE WITH AND WITHOUT CASTERS

- Rubber lined sturdy working table.
- Built in brackets allow you to create different work stations.
- Independent adjustable feet.
- Collapsible for ease of transport.
- Constructed of 18 gauge 2" x 2" square tubing.



Possible configurations with multiple tables.

Model	Length Inches (mm)	Width Inches (mm)	Height Inches (mm)	Net Weight Pounds (kg)	W.L.L. Pounds (kg)
AWT7523	75.9 (1927)	24 (608)	38-40.5(965-1030)	147.4 (67)	4840 (2200)
AWT7523C (with wheels)	75.9 (1927)	24 (608)	38-40.5(965-1030)	162.8 (74)	4840 (2200)



### GLASS PROCESSING TABLE

Our processing table is designed to make your work more efficient. The table top tilts from being flat to various degrees for you to work more comfortably. It can handle sheets of glass with thicknesses up to 1 1/2" easily. The Kitchen Glass Processing Table is 79" in length, its height can be adjusted from 29" to 39", and it tilts at 2 angles, either 45° or 76°. It comes with casters that make transportation easier. The collapsible design saves on freight costs.

#### Specifications

At Flat Position:	79" x 24" x 39" (2000mm x 600mm x 1000mm)
Tilt at 45°:	79" x 24" x 46" (2000mm x 600mm x 1180mm)
Tilt at 76°:	79" x 24" x 49" (2000mm x 600mm x 1250mm)

Model	Length Inches (mm)	Width Inches (mm)	Height Inches (mm)	Net Weight Pounds (kg)	W.L.L. Pounds (kg)
KPT8340	79.6 (2024)	25.3 (644)	40 (1014)	229 (104)	1320 (600)

