



ABACO MACHINES OPERATION MANUAL NEW GENERATION CABLE LIFTER



ABACO MACHINES USA, INC.
(EAST COAST OPERATION)

505 Edwards Court
Newport News, VA 23608

Tel: 757-877-5243
Fax: 757-877-5863

Email: sales@abacomachines.com
Website: www.abacomachines.com

ABACO MACHINES USA, INC.
(WEST COAST OPERATION)

20224 S. Normandie Ave.
Torrance, CA 90502

Tel: 310-532-0366
Fax: 310-532-0499

Email: sales@abacomachines.com
Website: www.abacomachines.com

ABACO MACHINES
INTERNATIONAL

Unit 4/34-36 Fairfield Street
Fairfield N.S.W. 2163 Australia

Tel: 61-2-9632-4990
Fax: 61-2-9632-1510

Email: abacomachines@abaco.com.au
Website: www.abaco.com.au

I. GENERAL

The New Generation Abaco Lifter is a hoisting accessory for lifting and moving slab-form loads with smooth surfaces. It can be used in and outside the factory.

II. SAFETY INSTRUCTIONS

A. For Abaco Lifter:

- 1) Carefully consider all safety regulations and existing standards and codes in your country for hoisting operations.
- 2) Permission to work with the Abaco Lifter should only be given to persons who are suitably trained, competent and acquainted with this operating manual and safety regulations.
- 3) Inspect the clamp. If the clamp is worn or damaged, do **not** use.
- 4) Select the proper size clamp for the job. Determine the weight of the slab to be lifted. Do **not** exceed the W.L.L. (Working Load Limit) shown on the clamp. The slab thickness **must** be within the grip range specified by the manufacturer.
- 5) All personnel must stand clear of the load while it is being lifted or moved.
- 6) The grip depends on friction. Check that the rubber pads are free from dirt, grease, and other substances that may reduce their effectiveness.
- 7) Do **not** lift wet slabs. Since the grip depends on friction, lifting wet slabs may cause the rubber pads to lose their grip.
- 8) No more than **one** slab should be lifted at any one time.
- 9) Position the clamp so that it is square with the slab to be lifted and in the center of the slab so that the load is balanced.
- 10) Make sure that the slab is inserted to the full depth into the opening of the clamp.
- 11) Take up the slack slowly. A trial tensioning of the load will usually indicate proper balance.
- 12) Do not lower the clamp onto other slabs or material while lowering the slab into the racks, as the clamp will release its load.

B. General Safety Instructions for Hoisting Accessories:

IMPORTANT! In order to protect people from getting injured, it is important to follow some general safety directions while using hoisting accessories.

- 1) Read the operating manual carefully before using the hoisting accessories.
- 2) Make sure that the operating manual is always available when the hoisting accessories are used.
- 3) Give permission to work with the hoisting accessories only to people who are suitably trained and competent.

- 4) Wear safety equipment like a helmet, gloves and safety boots.
- 5) Never leave a lifted load unsupervised.
- 6) Lift a load only as much as is really necessary.
- 7) Do **not** get underneath a load, and do **not** permit others to do so.
- 8) Make sure all connections, bolts, and nuts are tight. Inspect these before **every** use.
- 9) Hoisting accessories must be stored in a place where they are protected against weather conditions and products that may be harmful to the accessories.
- 10) Defective hoisting accessories should no longer be used.
- 11) Repairs and checks should be made only by qualified persons.

III. INSTRUCTIONS FOR USE

- 1) Move the top of the slab out from the pack of slabs by means of a pinch bar or a wedge allowing enough room for the back plate of the clamp to pass between the slab and the pack of slabs.
- 2) Position the clamp squarely and in the center of the slab so that the load is balanced.
- 3) Make sure that the slab is inserted to the full depth into the opening of the clamp.
- 4) Push down the Release Button so that the jaws will lock onto the slab when the lifting cable is raised.
- 5) Lift the slab slowly to ensure the load is balanced.
- 6) Before lowering the load, make sure that there are no obstructions that the load or the clamp could unintentionally rest on. In this event, the clamp can drop the load.

IMPORTANT: Carefully observe the Safety Instructions supplied with the lifting clamp.

IV. TECHNICAL SPECIFICATIONS

Abaco Lifter 30

Maximum Load: 2646 lbs (1200kg)

Grip Range (Min-Max): $\frac{3}{8}$ - $1\frac{1}{8}$ " (10 – 30mm)

Weight of Clamp: 50 lbs (22.8kg)

Abaco Lifter 40

Maximum Load: 2646 lbs (1200kg)

Grip Range (Min-Max): $\frac{3}{8}$ - $1\frac{5}{8}$ " (10 – 40mm)

Weight of Clamp: 51 lbs (23kg)

Abaco Lifter 50

Maximum Load: 2646 lbs (1200kg)

Grip Range (Min-Max): $\frac{3}{8}$ - 2" (10 – 50mm)

Weight of Clamp: 51 lbs (23.2kg)

Abaco Lifter 60

Maximum Load: 2646 lbs (1200kg)

Grip Range (Min-Max): $\frac{5}{8}$ - $2\frac{3}{8}$ " (15 – 60mm)

Weight of Clamp: 77 lbs (34.9kg)

Abaco Lifter 70

Maximum Load: 2646 lbs (1200kg)

Grip Range (Min-Max): $\frac{5}{8}$ - $2\frac{3}{4}$ " (15 – 70mm)

Weight of Clamp: 78 lbs (35.4kg)

Abaco Lifter 75

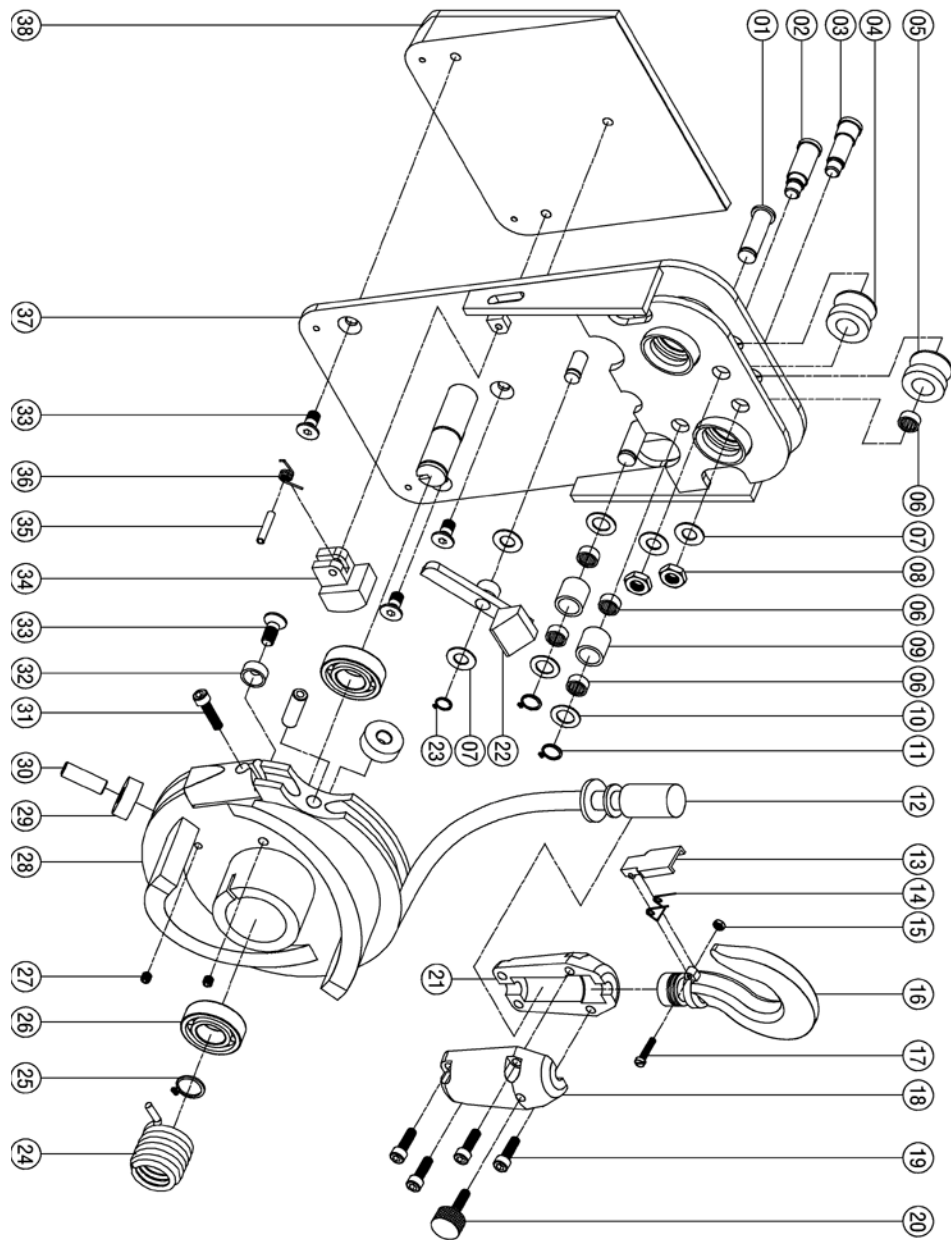
Maximum Load: 2646 lbs (1200kg)

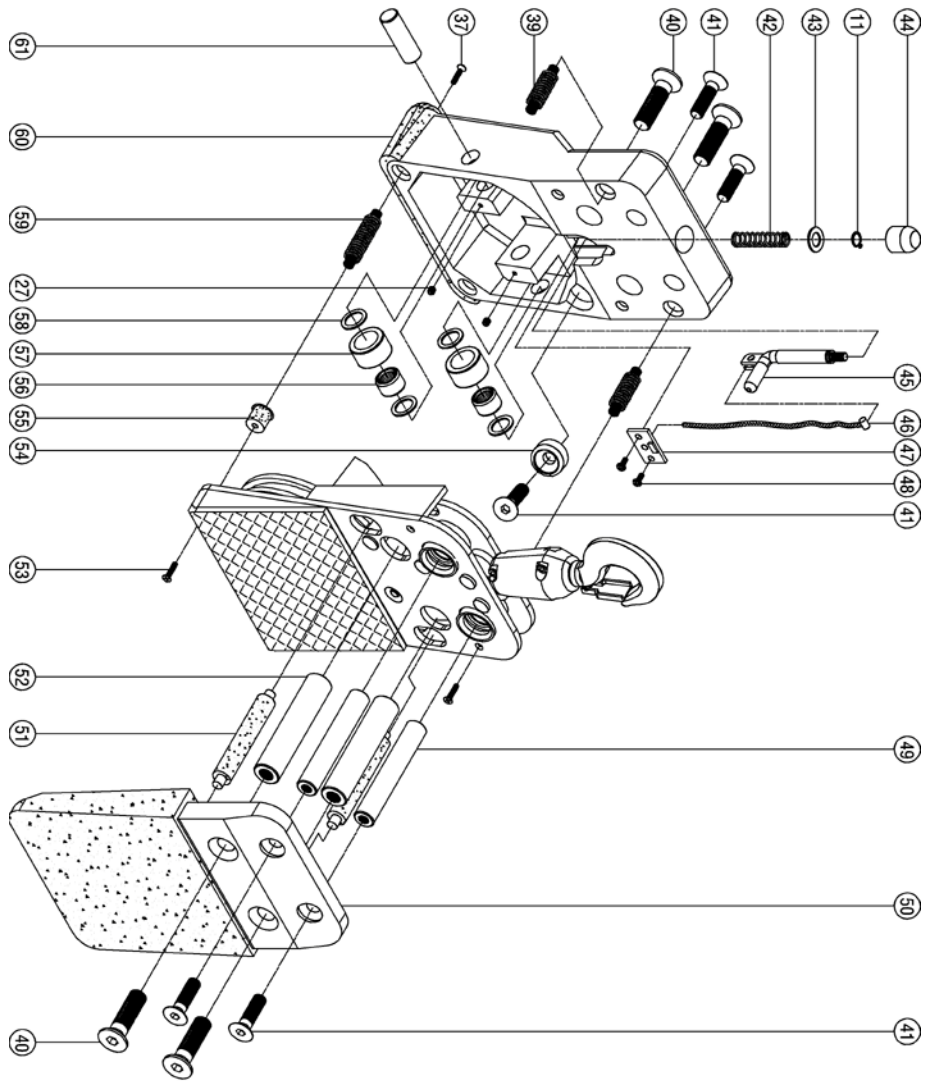
Grip Range (Min-Max): $\frac{3}{4}$ - 3" (20 – 75mm)

Weight of Clamp: 79 lbs (35.7kg)

V. SPARE PARTS LIST

Num.	Description	Qty.	Num.	Description	Qty.
1	Shaft of Pulley B	1	32	Spacer	1
2	Shaft of Pulley A1	1	33	M8 x 15 Alan Key Socket Counter Sink Head	4
3	Shaft of Pulley A2	1	34	Locking Latch	1
4	Pulley A1	1	35	Bissel Pin (ø5 x 30mm)	1
5	Pulley A2	1	36	Torsion Spring	1
6	Roller Bearing HK 1210	5	37	Center Sliding Plate	1
7	Aluminum Washer (ø10 x ø17 x 0.8mm)	4	38	Clamp Plate	1
8	M10 Locking Nut	2	39	Top Extension Spring	2
9	Pulley B	2	40	M16 x 50 Alan Key Socket Head (countersink)	4
10	Aluminum Washer (ø12 x ø18 x 0.8mm)	3	41	M12 x 40 Alan Key Socket Head (countersink)	5
11	Circlip External ø12	3	42	Compression Spring	1
12	Steel Cable	1	43	Steel Washer (ø12 x ø23 x 1mm)	1
13	Swivel Hook Latch	1	44	Release Button (Red Knob)	1
14	Spring Latch	1	45	Linker Rod A 90°	1
15	M4 Nut	1	46	Release String	1
16	Swivel Hook	1	47	Guide Pad	1
17	M4 x 20 Cap Screw	1	48	M4 x 10 Cap Screw	2
18	Swivel Housing A	1	49	Top Pin (ø20mm)	2
19	M6 x 20 Alan Key Socket Head (counterbore)	4	50	Back Plate With Rubber	1
20	Hand Knob	1	51	Stop Pin With Rubber	2
21	Swivel Housing B	1	52	Bottom Pin (ø25mm)	2
22	Linker Rod	1	53	M4 x 20 Screw	8
23	Circlip External ø10	1	54	Roller A	1
24	Torsion Spring	1	55	Rubber Cap	2
25	Circlip External ø20	1	56	Roller Bearing HK 1816	2
26	Ball Bearing 6004	2	57	Roller B (ø24 x ø35 x 20mm)	2
27	M6x6 Hexagon Socket Set Screw	6	58	Brass Washer (ø18 x ø25 x 0.5mm)	4
28	Cam Wheel	1	59	Bottom Extension Spring	2
29	Roller C	4	60	Cover Cam Wheel	1
30	Shaft of Roller C	4	61	Pin Roller B (ø18 x 55mm)	2
31	M6 x 25 Alan Key Socket Head (counterbore)	1			





VI. WARRANTY

At the time of delivery, it is necessary to check that the clamp has not been damaged during shipment. Any claims must be presented within 8 days of the date of delivery of the product. We grant you six (6) months warranty on the Abaco Lifter from the day of purchase.

The warranty coverage is not applicable:

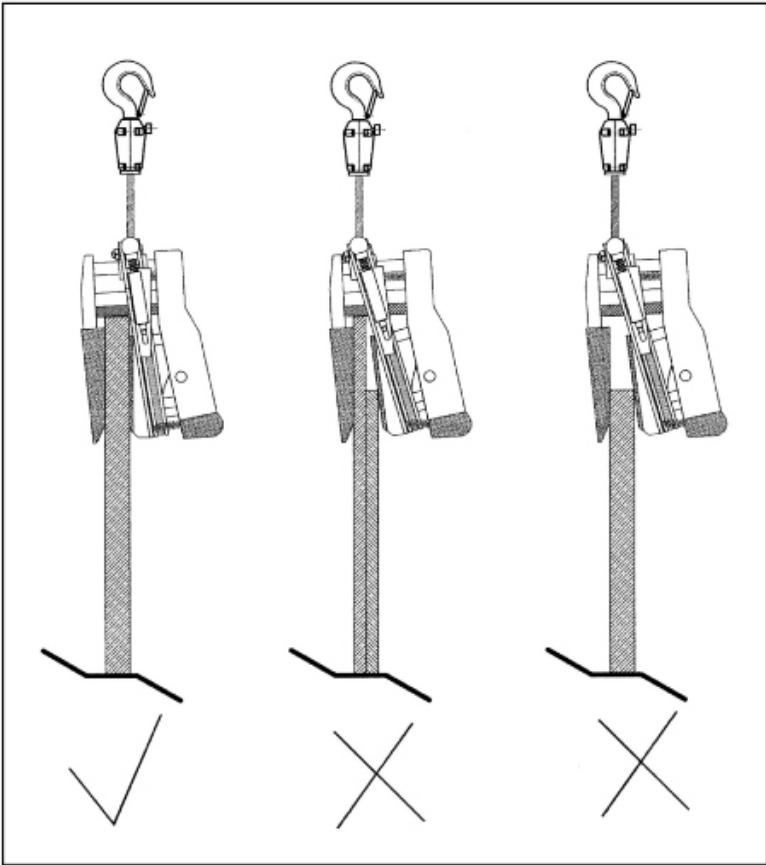
- When the clamp is handled incorrectly during maneuvering.
- When the operator fails to comply with the instructions in this booklet.
- When the clamp's maximum permissible capacity is exceeded.
- When the specifications for slab thickness are not followed.
- When damages are due to inadequate maintenance and inspections.
- When damage is due to improper storage.
- When repairs were performed by the user without our permission.
- When non-original spare parts were used.

VII. INSPECTION, MAINTENANCE, & REPAIR

It is important to establish a regular procedure for clamp inspection. Frequency of inspection will depend upon the amount of use the clamp receives. You may wish to maintain a written record, indicating inspection dates, condition of the clamp on each of those dates, and any repairs made. Inspection records should be reviewed periodically.

Always use original spare parts when carrying out repairs or maintenance.

Examples: Correct and incorrect method of gripping slabs.



WARRANTY CERTIFICATE

In order to validate the warranty, it is mandatory to return the attached warranty certificate, duly complete, within eight (8) days after purchase along with a copy of the receipt or Bill of Sale.

PERIOD

The warranty starts from the date of purchase on the receipt and is valid for six (6) months. Please remember to include a copy of your receipt when sending in the warranty certificate.

LIMITATIONS

This warranty is limited to the replacement of parts recognized as defective by ABACO MACHINES (excluding worn components and consumables). The manufacturer is not responsible for any direct or indirect, material or immaterial damages caused to persons or property by failure of the machine or the non-operation of the machine.

CONDITIONS

To benefit from the warranty, it is mandatory to return the attached warranty certificate, duly complete, within eight (8) days after purchase along with a copy of the receipt or Bill of Sale.

EXCLUSIONS

Warranty does not apply to damages or failures caused by:

- Incorrect use, misuse, error in transportation, handling, or maintenance on the user's end.
- Use of non-genuine parts or accessories.
- Use of incorrect specifications.

HOW TO CLAIM

During the warranty period, if the product is discovered to be defective, please contact the retailer where you purchased the product first for review and evaluation. The retailer will inform you of the appropriate method of dealing with your claim and advise you of your nearest approved service center.