



**ABACO MACHINES**  
**OPERATION MANUAL**  
**ABACO SELF-LOCKING DOLLY M2**



ABACO MACHINES USA, INC.  
(EAST COAST OPERATION)

505 Edwards Court  
Newport News, VA 23608

Tel: 757-877-5243  
Fax: 757-877-5863

Email: [sales@abacomachines.com](mailto:sales@abacomachines.com)  
Website: [www.abacomachines.com](http://www.abacomachines.com)

ABACO MACHINES USA, INC.  
(WEST COAST OPERATION)

20224 S. Normandie Ave.  
Torrance, CA 90502

Tel: 310-532-0366  
Fax: 310-532-0499

Email: [sales@abacomachines.com](mailto:sales@abacomachines.com)  
Website: [www.abacomachines.com](http://www.abacomachines.com)

ABACO MACHINES  
INTERNATIONAL

Unit 4/34-36 Fairfield Street  
Fairfield N.S.W. 2163 Australia

Tel: 61-2-9632-4990  
Fax: 61-2-9632-1510

Email: [abacomachines@abaco.com.au](mailto:abacomachines@abaco.com.au)  
Website: [www.abaco.com.au](http://www.abaco.com.au)

## **I. PRODUCT OVERVIEW**

The Abaco Self-Locking Dolly M2 is designed with self-locking jaws for maneuvering glass and stone slabs around the shop, warehouse, or on work sites. The rubberized jaw and base protects the slabs against chipping and scratching while transporting. The self-locking jaws' clamping strength is proportional to the weight of the slab, hence the heavier the slab the larger the clamping force. The M2 Dolly has pressurized wheels and a heavy duty swivel caster that increases stability and flexibility in narrow and rough surfaces.

## **II. STRUCTURE**

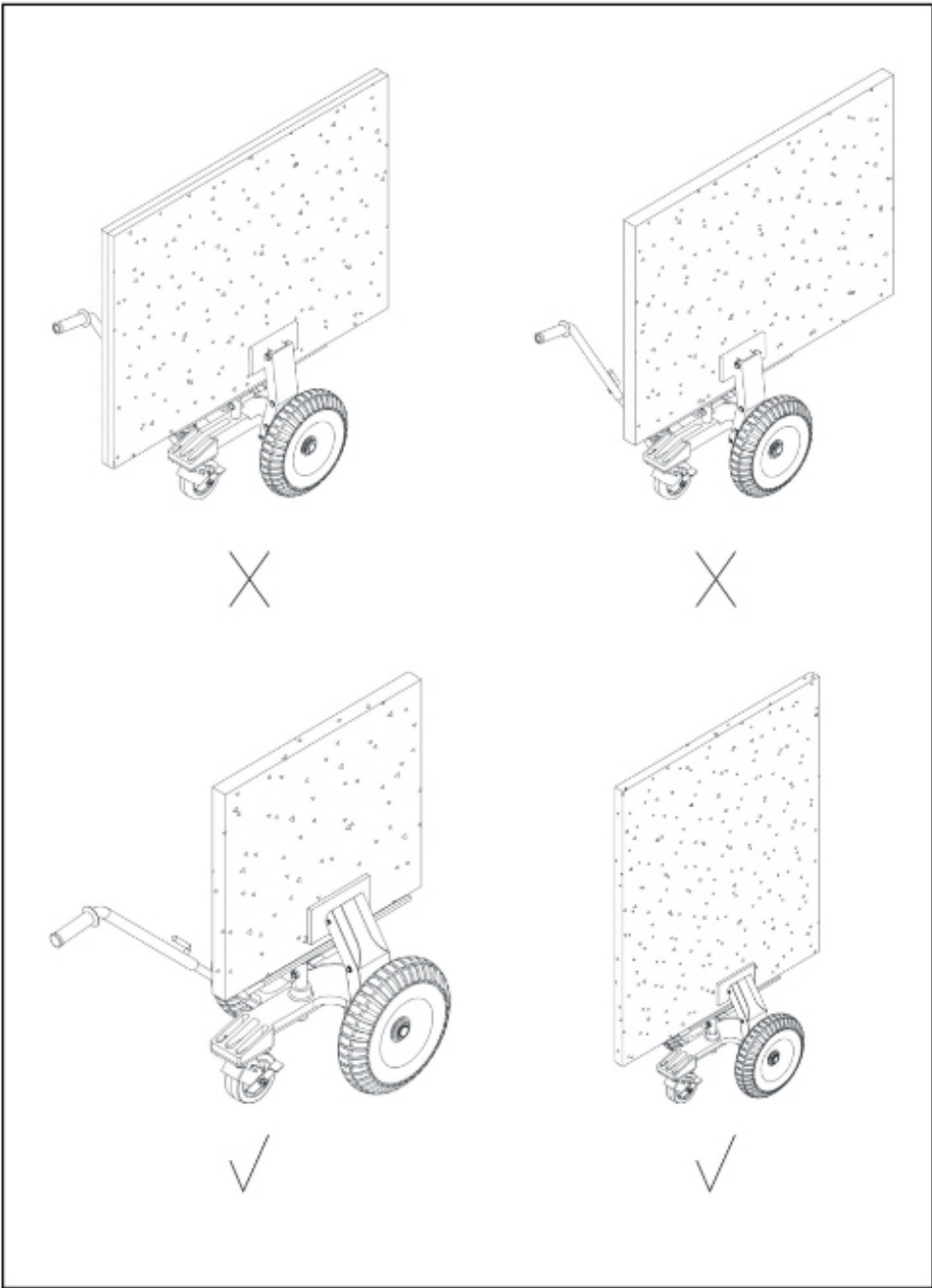
The Self-Locking Dolly M2 is constructed of a high tensile aluminum and steel body, large pneumatic wheels and a heavy duty swivel caster.

The self-locking jaw is activated automatically when the load is applied to it.

## **III. INSTRUCTIONS FOR USE**

Follow these procedures when using the Self-Locking Dolly M2:

1. Ensure that the swivel caster has been locked, the brake engaged, before placing any load onto the dolly.
2. Place the panel slightly off center so it can be easily handled.
3. Before moving the dolly with a load, make sure that the load has been secured.
4. Unlock the caster, hold the panel firmly, and then start to move to the desired place.
5. To unload the panel, just lift the panel up slowly, and the self-locking jaw will release the load automatically.
6. Do not load the Dolly beyond the Working Load Limit rate by the manufacturer.



#### **IV. MAINTENANCE AND REPAIR**

Check the air pressure in the pneumatic wheels often.

Inspect the Dolly for any cracks or defects. If any of these are found, do **not** use.

Lubricate the bearing wheels and caster as needed.

Keep common worn part on hand for replacement.

#### **V. WARRANTY**

At the time of delivery, it is necessary to ensure that the Dolly has not been damaged during shipment. Any claims must be presented within eight (8) day of the date of delivery of the product.

We grant you six (6) months warranty on the Dolly counted from the day of purchase.

The warranty coverage is not applicable:

- When the Dolly has been misused.
- When the maximum capacity is exceeded.
- When damages are due to inadequate maintenance and inspections.
- When damages are due to improper storage.
- When repairs are performed by the user without our permission.
- When non-original spare parts are used.

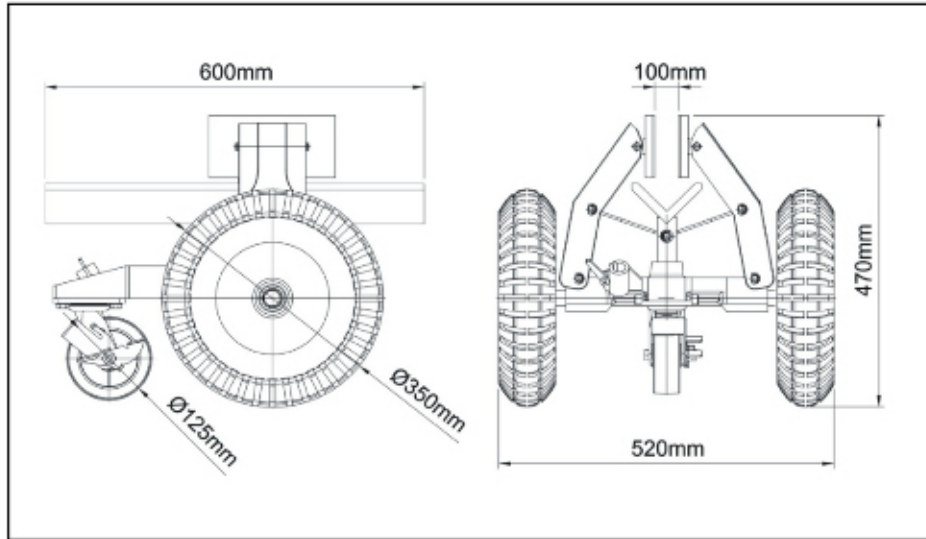
#### **VI. SPECIFICATIONS**

Grip Range:  $\frac{3}{8}$  - 4" (10 – 100mm)

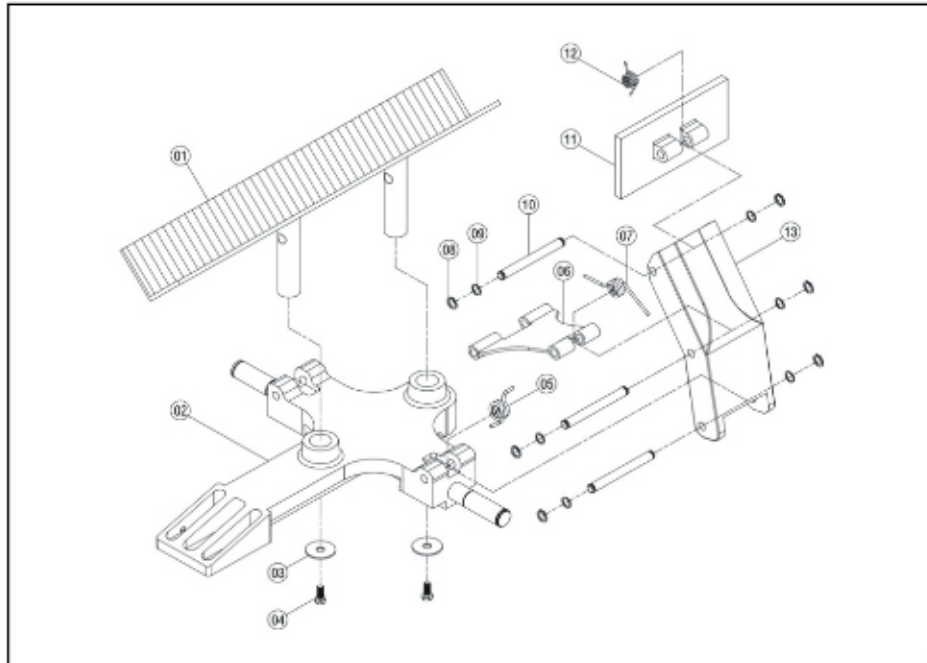
Seat Length: 23 $\frac{3}{8}$ " (600mm)

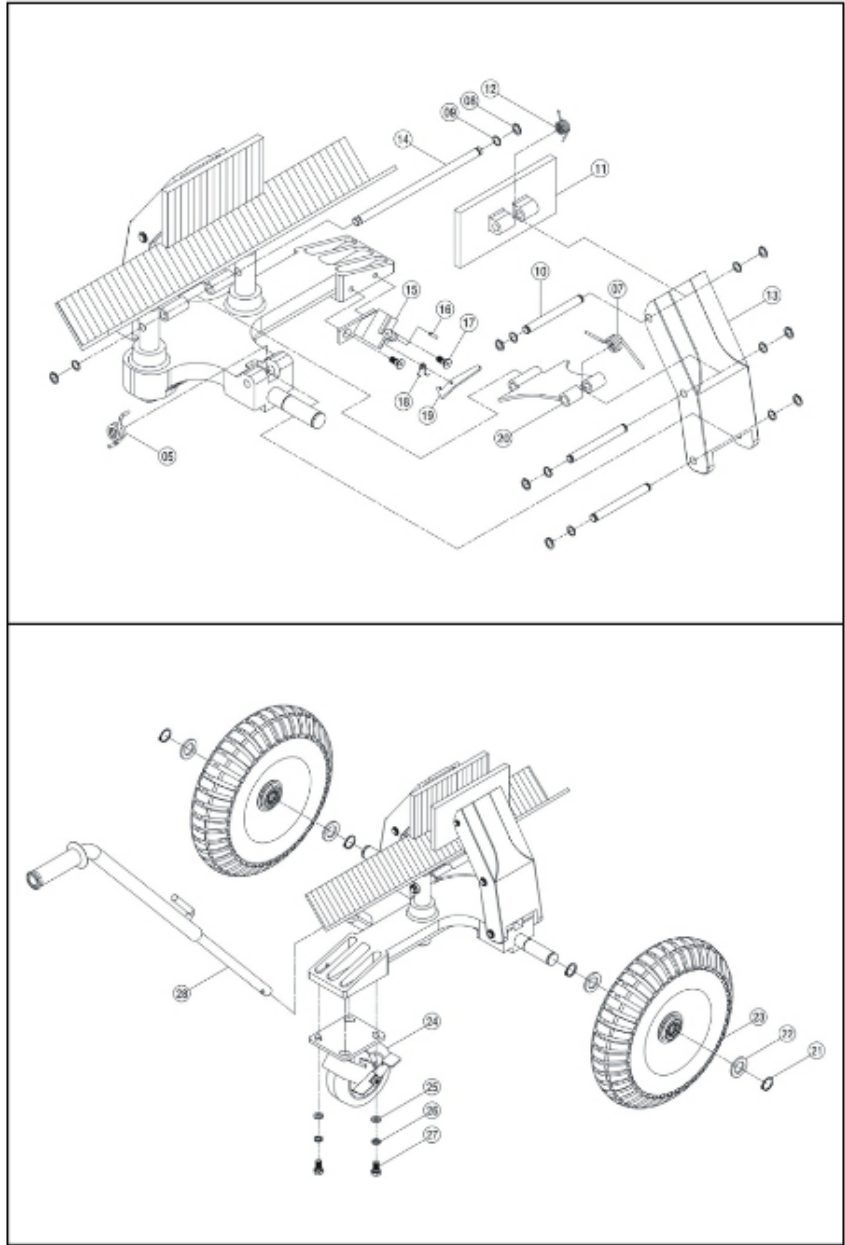
Net Weight: 75 lbs (34kg)

Dimensions L x W x H: 23 $\frac{3}{8}$  x 20 $\frac{1}{2}$  x 18 $\frac{1}{2}$ " (600 x 520 x 470mm)



## VII. PARTS DIAGRAMS





Part Num.	Description	Qty.
SLTM201	Support Plate	1
SLTM202	Main Body	1
SLTM203	Steel Washer $\phi 35 \times \phi 8 \times 4$	2
SLTM204	Hex Bolt M8 x 20	2
SLTM205	Activate Spring	2
SLTM206	Right Pivot Plate	1
SLTM207	Pivot Plate Spring	2
SLTM208	Circlip $\phi 12$	14
SLTM209	Aluminum Washer $\phi 18 \times \phi 12 \times 0.8$	14
SLTM210	Clamp Pin	6
SLTM211	Clamp Plate	2
SLTM212	Clamp Plate Spring	2
SLTM213	Clamp	2
SLTM214	Support Plate Pin	1
SLTM215	Handle Holder	1
SLTM216	Holder Pin	1
SLTM217	Counter Sunk Cap Screw M8 x 20	2
SLTM218	Torsion Spring	1
SLTM219	Latch	1
SLTM220	Left Pivot Plate	1
SLTM221	Circlip $\phi 25$	4
SLTM222	Copper Washer $\phi 35 \times \phi 25 \times 1$	4
SLTM223	Pneumatic Wheel $\phi 350$	2
SLTM224	Swivel Caster $\phi 125$	1
SLTM225	Steel Washer $\phi 10 \times \phi 22 \times 2.5$	4
SLTM226	Spring Washer $\phi 10$	4
SLTM227	Hex Bolt M10 x 20	4
SLTM228	Handle	1

